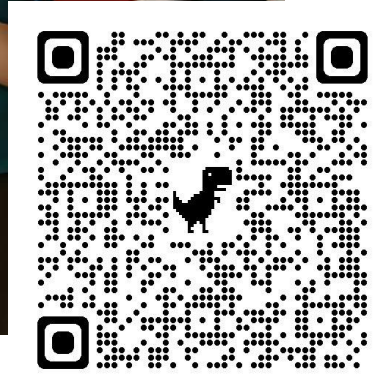
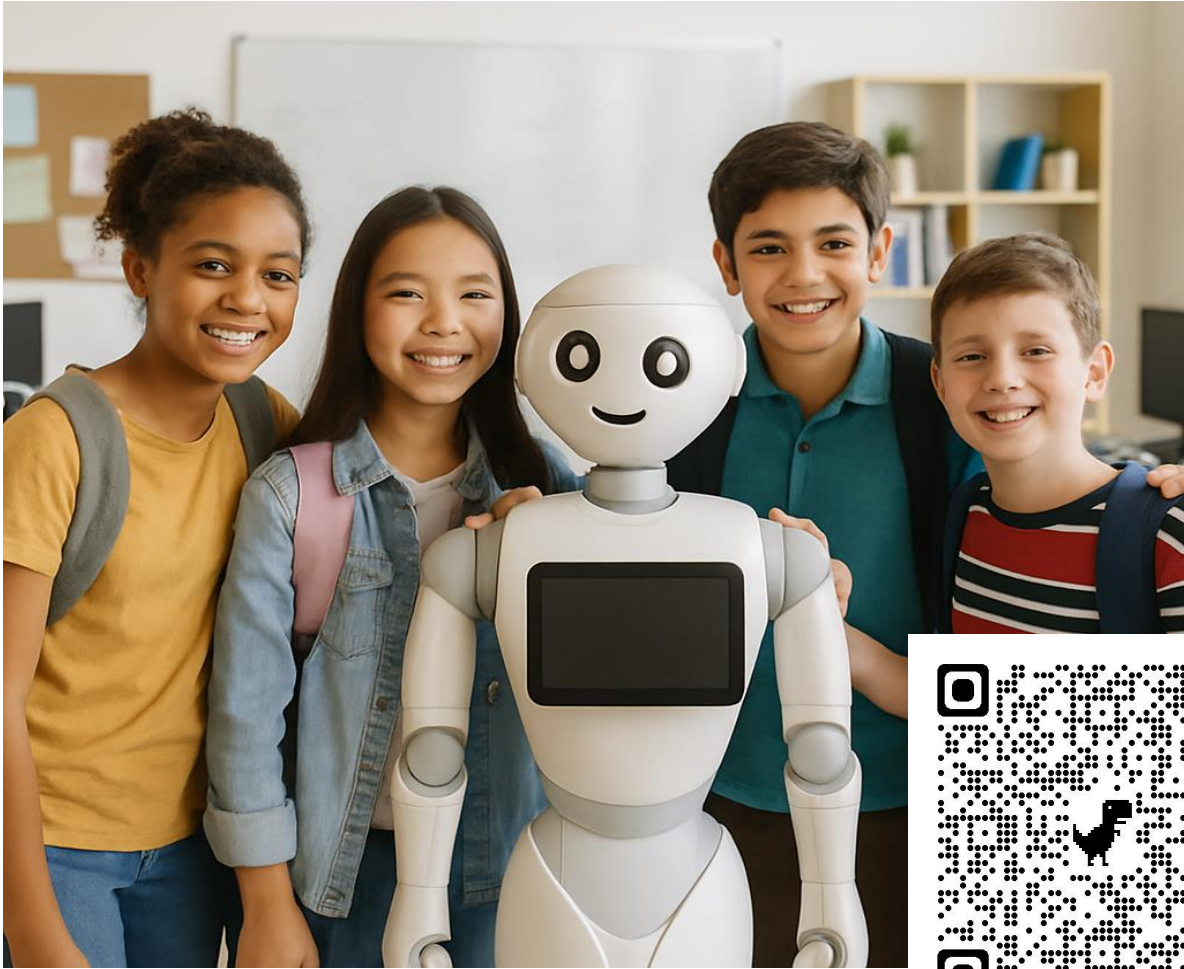


Student name	_____
Phone Number	_____

# Computer World

Prep 3 \_ Second Term 2026



**Mr/ Ebrahim Elkomy**

**Tel\_No \_ 01096169792**



**Mr \_ Ebrahim Elkomy**

**010 96169792**



**الأستاذ ابراهيم الكومي**  
**01096169792**

## Third Preparatory Grade Curriculum - Second Semester, 2026

### { Chapter 1: Data }

- Data Types
- Constants and Variables
- Naming Rules for Constants and Variables
- Declaring Constants
- Scope of Variables and Constants
- Assignment Statement
- Arithmetic Operations Priority
- Errors

### { Chapter 2: Branching }

- Branching using the If..Then Statement
- Conditional Expressions
- Branching using the If..Then..Else Statement
- Branching using the Select Case Statement

### { Chapter 3: Looping & Procedures }

- Using the For..Next Statement
- Using the Do While..Loop Statement
- Procedures
- Declaring a Sub-Procedure (Sub)
- Declaring a Function (Function)

### { Chapter 4: Cyber Bullying }

- Introduction
- Electronic Media for Cyber Bullying
- Forms of Cyber Bullying
- How to Protect Yourself from Cyber Bullying
- Real-life Situations

## Chapter One: Data (Complete) III

### 1. Data Introduction

In Visual Basic.NET, all data entered into the computer is stored in the memory (**RAM**). This data is divided into different types to manage memory efficiency.

### 2. Data Types (Categories)

- **Numeric Data Types:**

- **Integers (Whole numbers):** Byte, Short, Integer, Long.
- **Non-Integers (Decimals):** Single, Double, Decimal.

- **Character Data Types:**

- Char: Stores only one character.
- String: Stores a set of characters (Text).

- **Miscellaneous Data Types:**

- Boolean: Stores only two values (True or False).
- Date: Stores dates and times.
- Object: Can store any type of data.

### 3. Constants and Variables

#### A) Constants

They are places in memory with a fixed value that **cannot change** during the program execution.

- **Syntax:** Const ConstantName As DataType = Value

- **Examples:**

1. Const Pi As Single = 3.14
2. Const School\_Name As String = "Future School"
3. Const Gravity As Double = 9.8

## B) Variables

They are places in memory whose values **can change** during the program execution.

- **Syntax:** Dim VariableName As DataType
- **Examples:**
  1. Dim User\_Age As Integer
  2. Dim Student\_Name As String
  3. Dim Total\_Price As Decimal = 0

### 4. Variable Naming Rules (Crucial) ☞ ☐

When naming variables or constants, you must follow these rules:

1. **Must start with a letter** (A..Z) or an **underscore** (\_).
2. **Cannot contain special characters** (Spaces, dots ., symbols like ?, \*, #, @).
3. **Cannot be a Reserved Word** (Keywords used by the language like Dim, As, Const, Double, Sub).
4. **Meaningful names:** Use names that represent the purpose (e.g., Birth\_Date instead of D).

### 5. Variable Scope (Visibility) 🌐

This determines where the variable can be used:

- **Local Level (Procedure Scope):**  
Declared **inside** a Sub or Function. It is only visible and usable within that specific block.
- **Class Level (Form Scope):**  
Declared at the **top** of the code (under Public Class), outside any Sub. It is visible and usable by **all procedures** in that form.

## 6. The Assignment Statement

It is the process of storing a value into a variable or constant.

- **Format:** Variable\_Name = Value
- **Example:** Tax = 0.14 or Label1.Text = Student\_Name.
- The Left side represents the variable, and the Right side represents the value/expression.

## 7. Types of Errors

1. **Syntax Errors:** Errors in writing the code's rules (e.g., Dim X As Intger). The compiler detects them immediately.
2. **Logic Errors:** The program runs, but the results are wrong (e.g., using + instead of \* for area).
3. **Runtime Errors:** Errors that happen while the program is running (e.g., dividing by zero). We use **Try...Catch** to handle these.

**A) Write (T) for True or (F) for False:**

1. ( ) Double can be used as a valid variable name.
2. ( ) A variable declared at the Class level can be used by all procedures in the form.
3. ( ) Logic errors cause the program to crash immediately.
4. ( ) The underscore \_ can be used as the first character in a variable name.
5. ( ) The String data type is used for characters and text.

**B) Choose the correct answer:**

1. Which of the following is an invalid variable name?  
A) My\_Age B) 5\_Student C) \_Name D) Total
2. To store a salary that includes decimals, the best data type is:  
A) Integer B) Boolean C) Decimal D) Short
3. Declaring a variable inside a Sub makes it a:  
A) Global variable B) Local variable C) Constant D) Static
4. Which error occurs when you use the wrong mathematical formula?  
A) Syntax B) Runtime C) Logic D) Input
5. The keyword used to declare a constant is:  
A) Dim B) Const C) Sub D) End

**C) Complete the sentences using:****( RAM - Try...Catch - Boolean - Syntax - Class )**

1. Variables are stored in the ..... during program execution.
2. .... data type can only store True or False.
3. To handle runtime errors, we use the ..... statement.
4. Errors in code grammar are called ..... errors.
5. To make a variable visible to all procedures, declare it at the .....

**A) Write (T) for True or (F) for False:**

1. ( ) Try...Catch is used to find syntax errors.
2. ( ) Constants must be initialized with a value at the time of declaration.
3. ( ) A variable name can contain spaces.
4. ( ) Char is used to store multiple words or sentences.
5. ( ) RAM is where variables are kept while the program is running.

**B) Choose the correct answer:**

1. To store a birth date, we use the ..... data type.  
A) String B) Boolean C) Date D) Decimal
2. Which part of the code is executed if an error happens in a Try...Catch block? A) Try B) Catch C) End Sub D) Dim
3. Which of the following is a reserved keyword?  
A) My\_Dim B) Const C) School D) Grade
4. In Price = 100, the = symbol is called the ..... operator.  
A) Addition B) Comparison C) Assignment D) Logic
5. If a variable is only usable inside a Button\_Click event, it is:  
A) Local B) Class level C) Constant D) Integer

**C) Complete the sentences using:**

( Integer - Logic - \_ - Single - Date )

1. A variable name can start with a letter or the ..... symbol.
2. To store a whole number like 100, we use the ..... data type.
3. When \$5 + 5\$ results in \$25\$ because of a wrong operator, it is a ..... error.
4. .... data type is used for decimals with small precision.
5. To store someone's birthday, use the ..... data type.

**A) Write (T) for True or (F) for False:**

1. ( ) Dim is used to declare constants that do not change.
2. ( ) A variable name can start with an underscore \_.
3. ( ) Logic Errors are discovered by the programmer when the results are incorrect.
4. ( ) The String data type is used to store numeric values for calculations.
5. ( ) Constants must be given a value at the moment they are declared.

**B) Choose the correct answer:**

1. Which of the following is an invalid variable name?  
A) \_Name B) User\_Age C) 1st\_Student D) Price
2. To store a value like True or False, we use the data type:  
A) String B) Boolean C) Decimal D) Integer
3. Variables declared inside a Sub procedure are called .....  
variables. A) Local B) Class C) Reserved D) Logic
4. Errors that occur when the program is running are called:  
A) Syntax B) Manual C) Logic D) Runtime
5. The statement Const Pi As Double = 3.14 is an example of:  
A) Variable B) Procedure C) Constant D) Event

**C) Complete the sentences using:**

( RAM - Try...Catch - Syntax - Decimal - String )

1. Data entered into the computer is stored in the .....
2. To handle runtime errors and prevent crashes, we use .....
3. .... data type is used to store text like a home address.
4. Errors in writing the grammar of the code are called ..... errors.
5. To store a salary that includes piasters (decimals), use the ..... type.

**A) Write (T) for True or (F) for False:**

1. ( ) Spaces are allowed in variable names as long as they are short.
2. ( ) Try...Catch is used to solve syntax errors while typing.
3. ( ) Variables at the Class level can be used by any procedure in the form.
4. ( ) Char is a character data type that stores only one character.
5. ( ) The assignment operator in Visual Basic is the = symbol.

**B) Choose the correct answer:**

1. Which keyword is used to declare a variable?  
A) Const B) Sub C) Dim D) As
2. A variable named Double is invalid because it is:  
A) Too short B) A reserved word C) Starts with a capital D) Contains symbols
3. Using the formula  $\text{Area} = \text{Length} + \text{Width}$  instead of multiplication is a:  
A) Logic Error B) Syntax Error C) Runtime Error D) System Error
4. The data type Integer is used for:  
A) Decimals B) Whole numbers C) Dates D) Logic
5. To define where a variable is usable, we are defining its .....  
A) Name B) Scope C) Value D) Size

**C) Complete the sentences using:**

( Const - RAM - \_ - Date - Logic )

1. A variable name can start with a letter or .....
2. Values that do not change during the program are declared using .....
3. When the program produces a wrong result, it is a ..... error.
4. To store the current day and month, we use the ..... data type.
5. Variables are cleared from the ..... when the program is closed.

**A) Write (T) for True or (F) for False:**

1. ( ) Data entered into a program is stored permanently in the CPU.
2. ( ) "Boolean" is a data type used to store True or False values.
3. ( ) The keyword "Dim" is used to declare constants in VB.net.
4. ( ) Syntax errors are easy to discover because the IDE points them out.
5. ( ) The default value for a numeric variable that hasn't been assigned is zero.

**B) Choose the correct answer:**

1. Which of the following is an integer data type?  
A) Single B) Integer C) Double D) Decimal
2. To declare a constant for a student's name, we use:  
A) Const B) Dim C) As D) Sub
3. The result of the operation  $12 \text{ MOD } 5$  is:  
A) 2.4 B) 2 C) 1 D) 0
4. If a variable is named `1_Number`, it causes an error because it starts with a:  
A) Symbol B) Letter C) Space D) Number
5. Which priority comes last in arithmetic operations?  
A) Exponents B) Parentheses C) Addition D) Multiplication

**C) Complete the sentences using the following words:**

( RAM - String - Range - Logical - Integer )

1. Data entered into the program is stored temporarily in the ..... memory.
2. When a program gives the wrong area of a circle, it is a ..... error.
3. The ..... of a data type represents its minimum and maximum possible values.
4. To store a user's address, we should use the ..... data type.
5. The ..... data type occupies 4 Bytes of memory space.

**A) Write (T) for True or (F) for False:**

1. ( ) Non-integer data types include Short and Long.
2. ( ) Variable values can change while the program is running.
3. ( ) The hashtag symbol # # is used when assigning a Date value.
4. ( ) The MOD operator is used to find the result of division.
5. ( ) Variable names can be any word, even if it is a reserved keyword like "As".

**B) Choose the correct answer:**

1. Which data type is used to store images and symbols?  
A) Boolean B) Date C) Object D) Char
2. To declare a variable, we use the syntax:  
A) Const X As String B) Dim X As String C) X As String D) Sub X As String
3. What is the result of  $2 + 3 * 2$ ?  
A) 10 B) 8 C) 12 D) 7
4. Errors that occur when a value exceeds the data type range are called:  
A) Syntax Errors B) Logical Errors C) Runtime Errors D) Coding Errors
5. The keyword used to create a new line in code is:  
A) Rem B) VbCrLf C) Me D) As

**C) Complete the sentences using the following words:**

( Constants - Single - Syntax - Me - Byte )

1. .... are memory locations whose values remain fixed during program execution.
2. Writing Din instead of Dim is considered a ..... error.
3. The ..... keyword refers to the current Form being used.
4. A variable of type ..... can only store whole numbers from 0 to 255.
5. For decimal numbers with small precision, we use the ..... data type.

## Chapter Two: Branching

### 1. Introduction

In flowcharts, we learned that we often need to branch—choosing one set of steps over another based on a specific condition. In programming, writing branching code is simply applying algorithmic logic using the specific syntax of the language (VB.net).

### 2. Branching using If...Then

Used to test a **single** condition.

- **Syntax:**

If (Conditional Expression) Then

    ' Code executed if condition is True

End If

- **Note:** If the condition is False, the program skips to the code after End If.

- **One-line format:** You can write If condition Then Code in one line without End If.

### 3. The Conditional Expression

It consists of three parts: (Variable/Constant) + (Logical Operator) + (Value/Variable/Formula). **Logical Operators:**

- = (Equal)
- <> (Not Equal)
- > (Greater than), < (Less than)
- >= (Greater than or equal), <= (Less than or equal)

### 4. Branching using If...Then...Else

Used when you have **two** paths: one for True and one for False.

- **Example from the lesson:**

Checking if a student passed ( $\geq 50$ ) or failed (Else).



- **Example (Age Check):**

If Age >= 18 Then

    MsgBox("You are an Adult")

Else

    MsgBox("You are a Minor")

End If

## 5. Branching using Select Case

Used when branching depends on the value of **one single variable** with many different conditions. It is cleaner than using many If statements.

- **Example (Days of the week):**

VB.Net

Select Case DayNumber

    Case 1

        MsgBox("Sunday")

    Case 2

        MsgBox("Monday")

    Case Else

        MsgBox("Other Day")

End Select

## 6. Important Tools in Branching

- **MOD Operator:** Returns the remainder of division. (Used to check if a number is even:  $N \text{ MOD } 2 = 0$ ).
- **Try...Catch:** Used to handle errors (Exception Handling) so the program doesn't crash if the user enters wrong data (like text instead of a number).
- **SelectedIndex:** Used with ComboBox to know which item the user chose (the first item is always Index 0).

**A) Write (T) for True or (F) for False:**

1. ( ) Branching is choosing between different paths based on a condition result.
2. ( ) The If...Then statement must always end with End If even if written on one line.
3. ( ) If the conditional expression result is True, the code after Then is executed.
4. ( ) The symbol  $\langle \rangle$  means "Greater than or equal".
5. ( ) Select Case is best used when checking one variable against many values.

**B) Choose the correct answer:**

1. Which keyword is used to execute code when the If condition is False? A) Then B) Else C) Select D) Case
2. To check if a number N is odd, we use the expression:  
A)  $N \text{ MOD } 2 = 0$  B)  $N \text{ MOD } 2 \langle \rangle 0$  C)  $N / 2 = 0$  D)  $N = \text{Odd}$
3. In Select Case, the code for values not handled by specific cases is placed under: A) Case Else B) Case Other C) Default D) End Select
4. The conditional expression  $5 \langle \rangle 10$  returns:  
A) True B) False C) 0 D) 5
5. The property SelectedIndex for the first item in a ComboBox is:  
A) 1 B) -1 C) 0 D) 2

**C) Complete the sentences using the following words:**

( Try...Catch - Conditional - If...Then - MOD - Select Case )

1. A ..... expression consists of a variable, a logical operator, and a value.
2. We use the ..... statement when we only have one path to execute if the condition is met.
3. The ..... operator is used to find the remainder of a division.
4. To prevent program crashes during input errors, we use .....
5. .... is more organized than If when testing many values for one variable.

**A) Write (T) for True or (F) for False:**

1. ( ) The result of a conditional expression is always either True or False.
2. ( ) Case Is < 0 is a valid way to write a condition in a Select Case block.
3. ( ) MsgBox is used to display a message to the user in a separate window.
4. ( ) In a ComboBox, the Index of the third item is 3.
5. ( ) Else is executed only if the condition in If...Then is True.

**B) Choose the correct answer:**

1. Which logical operator means "Equal to"?  
A) <> B) == C) = D) >=
2. If X = 10, what is the result of If X >= 10 Then MsgBox("Hi")?  
A) "Hi" is displayed B) Nothing happens C) Error D) False
3. The SelectedIndexChanged event belongs to which control?  
A) Button B) TextBox C) Label D) ComboBox
4. To write a branch for "Positive", "Negative", and "Zero", we use:  
A) If...Then B) Select Case C) Assignment D) Dim
5. Which keyword ends the Select Case block?  
A) End Select B) Stop Select C) End If D) Case Else

**C) Complete the sentences using the following words:**

( Else - True - Focus - Index - Logical )

1. When the If condition is met, its value is .....
2. The ..... keyword is used to run a different code if the condition is False.
3. Each item in a ComboBox has an ..... number starting from zero.
4. The TextBox1.Focus() command is used to move the ..... back to the text box.
5. > and < are called ..... operators.

**A) Write (T) for True or (F) for False:**

- ( ) End If is required when the If statement is written on multiple lines.
- ( ) The Try block contains the code that might cause an error.
- ( ) Select Case can only be used with numeric variables.
- ( )  $10 \text{ MOD } 2 = 0$  is a True conditional expression.
- ( ) The SelectedIndex property returns the text of the chosen item.

**B) Choose the correct answer:**

- What happens if the If condition is False and there is no Else?  
A) Program crashes                      B) It repeats the code  
C) It skips to End If                      D) It shows an error
- To check if a grade is a "Fail" (less than 50), we use:  
A)  $\text{Grade} > 50$  B)  $\text{Grade} < 50$  C)  $\text{Grade} = 50$  D)  $\text{Grade} \leq 50$
- In Select Case X, Case 1 To 10 checks if X is:  
A) Exactly 1 B) Exactly 10 C) Between 1 and 10 D) Not 1 or 10
- The part of Try...Catch that handles the error is:  
A) Try B) Catch C) Select D) Then
- Which symbol represents "Greater than or Equal"?  
A)  $=<$  B)  $=>$  C)  $\geq$  D)  $>>$

**C) Complete the sentences using the following words:**

( ComboBox - Then - Branches - MOD - Case )

- Branching means the program ..... into different directions based on logic.
- In the If statement, the code to run when the condition is True comes after .....
- We use ..... to give the user a list of items to choose from.
- Each specific value we check in a Select Case starts with the keyword .....
- To check if a year is a leap year, we often use the ..... operator.

### A) Write (T) for True or (F) for False:

1. ( ) You can use a mathematical formula as part of a conditional expression.
2. ( ) Case Else is mandatory in every Select Case statement.
3. ( ) The Catch block runs only if an error occurs in the Try block.
4. ( ) If  $A=5$  and  $B=5$ , then  $A<>B$  is True.
5. ( ) The MultiLine property allows a TextBox to display text on more than one line.

### B) Choose the correct answer:

1. If you have 50 different cases for one variable, the most efficient tool is: A) If...Then B) If...Then...Else C) Select Case D) MsgBox
2. The code `If X = 5 Then MsgBox("Yes")` (on one line) needs: A) End If B) Nothing else C) Else D) Select
3. Which operator checks for "Inequality"?  
A) == B) != C) <> D) ><
4. Try...Catch is primarily used for:  
A) Calculating sums B) Handling exceptions  
C) Declaring variables D) Looping
5. If  $N = 7$ , the result of  $N \text{ MOD } 2$  is: A) 0 B) 3.5 C) 1 D) 7

### C) Complete the sentences using the following words:

( End If - Items - False - One - Selection )

1. If the condition is not met, the result of the expression is .....
2. A single-line If statement does not require .....
3. The ..... property of a ComboBox is used to add the list of choices.
4. Select Case evaluates ..... variable at the top.
5. `ComboBox1.SelectedIndexChanged` is an event that triggers upon a

**A) Write (T) for True or (F) for False:**

- ( ) If...Then...Else is used when there are only two possible outcomes.
- ( ) The SelectedIndex of the very last item in a list is always 0.
- ( ) The statement If Grade >= 50 Then MsgBox("Pass") checks for success.
- ( ) You can nest If statements inside other If statements.
- ( ) End Select is the keyword used to start a Select Case block.

**B) Choose the correct answer:**

- What is the result of If 15 > 20 Then MsgBox("X") Else MsgBox("Y")? A) X B) Y C) XY D) Error
- To check if a temperature is exactly zero in Select Case, we write:  
A) Case Is = 0 B) Case 0 C) Case Zero D) Case = 0
- The Try...Catch block ends with the keyword:  
A) End Try B) End Catch C) Stop Try D) End If
- Which of these is a logical value? A) 10 B) "True" C) True D) Dim
- To move the cursor to a specific control, we use the method:  
A) Click() B) Text() C) Focus() D) Select()

**C) Complete the sentences using the following words:**

( Index - Select - Branching - Expression - Else )

- ..... allows the program to make decisions.
- The ..... of an item in a list represents its numerical position.
- A conditional ..... compares two values.
- The ..... keyword marks the beginning of a multi-option branching structure.
- If you want a "Fail" message when the "Pass" condition is False, use

## Chapter Three: Looping and Procedures ↻

### 1. The For...Next Statement

Used for **Limited Looping** when the number of repetitions is known in advance.

**General Syntax:** For Counter = Start To End [Step Increment]

Code to repeat

Next

*Examples of For...Next:*

- **Example 1 (Default Increment):** Displaying numbers from 1 to 5.  
For I = 1 To 5  
MsgBox(I) ' Displays 1, 2, 3, 4, 5  
Next
- **Example 2 (Using Step for jumps):**  
• Displaying even numbers from 2 to 10.  
For I = 2 To 10 Step 2  
ListBox1.Items.Add(I) ' Adds 2, 4, 6, 8, 10  
Next
- **Example 3 (Backward/Negative Step):** Counting down from 5 to 1.  
For I = 5 To 1 Step -1  
Label1.Text = Label1.Text & I & " " ' Displays: 5 4 3 2 1  
Next

### 2. The Do While...Loop Statement

Used when the number of repetitions is **unknown**, but depends on a specific condition. It repeats as long as the condition is **True**.

*Examples of Do While...Loop:*

- **Example 1 (Manual Increment):** Summing numbers from 1 to 5.  
VB.Net  
Dim Sum As Integer = 0, I As Integer = 1  
Do While I <= 5  
Sum = Sum + I  
I = I + 1 ' Important to increment manually



- **Example 2 (User Input):** Repeat until the user types "Exit".

VB.Net

```
Do While InputText <> "Exit"
```

```
    InputText = InputBox("Enter text or type Exit to stop")
```

```
Loop
```

- **Example 3 (Division Logic):** Dividing a number by 2 until it is less than 1.

VB.Net

```
Dim N As Single = 10
```

```
Do While N >= 1
```

```
    ListBox1.Items.Add(N)
```

```
    N = N / 2
```

```
Loop
```

### 3. Sub-Procedures (Sub)

A block of code with a name that executes a task but **does not return a value**.

*Examples of Sub:*

- **Example 1 (Simple Task):** Clearing multiple text boxes at once.

```
Sub ClearData()
```

```
    TextBox1.Text = ""
```

```
    TextBox2.Text = ""
```

```
End Sub
```

### 4. Functions

A block of code that receives inputs (parameters) and **returns a single value** as a result.

*Examples of Function:*

- **Example 1 (Arithmetic Function):** Summing two numbers.

VB.Net

```
Function Sum(A As Single, B As Single) As Single
```

```
    Return A + B
```

```
End Function
```

**A) Write (T) for True or (F) for False:**

1. For...Next is the best choice when the number of repetitions is unknown. ( )
2. The Step value in a loop can be a decimal number like 0.5. ( )
3. A Sub procedure can be used on the right side of an assignment statement (=). ( )
4. The Do While loop stops when the condition becomes False. ( )
5. VbCrLf is a constant used to start a new line in a TextBox. ( )

**B) Choose the correct answer:**

1. Which keyword is used to send a value back from a Function?  
A) Next B) Return C) Exit D) Loop
2. In For I = 1 To 10 Step 3, the value of I in the second repetition is:  
A) 4 B) 3 C) 2 D) 1
3. To clear all items in a ListBox, we use the method:  
A) Delete() B) Clear() C) Remove() D) Reset()
4. Parameters are declared in the:  
A) Event B) Assignment C) Procedure Header D) Next
5. If the Start value is greater than the End value, the Step must be:  
A) One B) Positive C) Zero D) Negative

**C) Complete the sentences using:**

( For...Next - Arguments - Sub - Exit - MultiLine )

1. To repeat a code 10 times, we use the ..... statement.
2. The values passed to a procedure when calling it are called .....
3. .... procedures are blocks of code that do not return any value.
4. The keyword ..... is used to exit the Do While block early.
5. Setting the ..... property to True allows the TextBox to show

multiple lines.

**A) Write (T) for True or (F) for False:**

1. In For I = 1 To 5, the default increment is 2. ( )
2. The Loop keyword marks the end of the Do While block. ( )
3. A Function must have a return data type in its declaration. ( )
4. Variables declared inside a Sub are accessible by all other procedures. ( )
5. Next is the keyword that increments the counter in a For loop. ( )

**B) Choose the correct answer:**

1. Which loop checks the condition before executing the code inside?  
A) For...Next B) Select Case C) Do While D) If...Then
2. The property used to add items to a ComboBox is:  
A) Items B) Text C) List D) Name
3. What is the value of I after exiting For I = 1 To 3?  
A) 3 B) 4 C) 2 D) 0
4. To move the focus to TextBox1, we use the method:  
A) Focus() B) Click() C) Text() D) Select()
5. ByVal means passing a parameter by its:  
A) Name B) Type C) Address D) Value

**C) Complete the sentences using:**

( Mod - Function - 5 - & - SelectedIndex )

1. A ..... is used when the code must return a result to the caller.
2. The ..... operator is used to find the remainder of a division.
3. In For I = 10 To 1 Step -2, the loop will repeat ..... times.
4. The ..... property of a ListBox returns the index of the chosen item.
5. To join two strings in VB.net, we use the ..... symbol.

**A) Write (T) for True or (F) for False:**

1. For...Next and Do While are types of Iteration structures. ( )
2. If the Step is negative, the Start must be less than the End. ( )
3. A Sub can accept multiple parameters separated by commas. ( )
4. Return must be the last statement executed in a Function. ( )
5. The counter variable in a For loop must be a numeric type. ( )

**B) Choose the correct answer:**

1. To repeat code until a user enters a negative number, use:  
A) For...Next B) If...Then C) Do While D) MsgBox
2. Which part of For I = 1 To 10 Step 2 is the increment?  
A) 1 B) 2 C) 10 D) I
3. A procedure that calculates the area and returns it to a Label is a:  
A) Function B) Sub C) Event D) Property
4. What happens if the Do While condition is False from the start?  
A) Error B) Code runs once C) PC crashes D) Code never runs
5. MsgBox("Hello" & VbCrLf & "World") shows the words on:  
A) One line B) Three lines C) Two lines D) Reverse

**C) Complete the sentences using:**

( For...Next - Sub - 1 - Parameters - Counter )

1. The keyword ..... is used to declare a block of code that returns no value.
2. To prevent a For...Next loop from becoming infinite, the ..... must reach the end value.
3. .... are the variables used in the procedure header to receive data.
4. The result of  $10 \text{ Mod } 3$  is .....
5. To repeat a task a specific number of times, ..... is more organized.

**A) Write (T) for True or (F) for False:**

1. You can nest a For...Next loop inside another For...Next loop. ( )
2. Sub procedures help in reducing code repetition. ( )
3. Do While condition is checked at the end of the loop in VB.net. ( )
4. A function can return more than one value at a time. ( )
5. Using Step 1 in For I = 1 To 10 is optional. ( )

**B) Choose the correct answer:**

1. Which is a valid variable name for a loop counter?  
A) Dim B) \ (stCounter C) \_Counter D) Counter!
2. Sum = Sum + I inside a loop is used for:  
A) Branching B) Accumulating C) Counting D) Selection
3. To call a function named Area(R), we write:  
A) Call Area B) Area(5) C) Sub Area(5) D) Dim Area
4. The SelectedIndex of the first item in a ListBox is:  
A) 1 B) 0 C) -1 D) 10
5. For I = 2 To 10 Step 2 will execute the code ..... times.  
A) 10 B) 2 C) 4 D) 5

**C) Complete the sentences using:**

( Method - Infinite - As - Start - ' )

1. The ..... statement is used to define the starting value of a loop.
2. In Do While I < 5, if I is never changed inside, the loop becomes .....
3. The data type of a Function return value is defined after the ..... keyword.
4. ListBox1.Items.Add("New") is a ..... call that adds an item.
5. The symbol ..... is used to write comments that the compiler ignores.

**A) Write (T) for True or (F) for False:**

1. The End Function keyword marks the end of a Function block. ( )
2. For I = 1 To 10 without a Step will count by 1. ( )
3. Arguments and Parameters are exactly the same thing. ( )
4. The Do While loop is suitable for finding the sum of an unknown list of numbers. ( )
5. MsgBox can be used inside a loop to show the value of the counter. ( )

**B) Choose the correct answer:**

1. How many times will For I = 1 To 3 run?  
A) 1      B) 2      C) 3      D) 4
2. Which procedure is used as part of an equation?  
A) Sub B) Function C) Event D) Form
3. To stop a loop before it reaches the end, we can use:  
A) Exit For B) End For C) Next D) Stop For
4. The MultiLine property is found in which control?  
A) Label B) TextBox C) Button D) ListBox
5. If I = 5, what is I = I + 2?  
A) 5      B) 2      C) 10      D) 7

**C) Complete the sentences using:**

**( VbCrLf - Return - Step - Do While - Procedure )**

1. A ..... procedure is called by its name followed by arguments in parentheses.
2. If the ..... condition is True, the code inside is executed.
3. We use ..... to move the cursor to a new line inside a string.
4. If the Start value is less than the End value, ..... should be positive.
5. To exit a function early, you can use the ..... statement.

## Chapter Four: Cyber Bullying

### 1. Introduction

Ethics in dealing with the internet and communication technology is vital for individuals and societies. This chapter aims to raise awareness about internet risks and provide skills to ensure **personal safety**.

### 2. Common Online Risks

- Getting incorrect information.
- Falling victim to online predators/attackers.
- **Privacy Violation:** Unauthorized access to your private info.
- **Identity Theft:** Someone pretending to be you.
- Theft of social media or E-mail accounts.
- Exposure to viruses, spyware, or hacking programs.

### 3. Defining Cyber Bullying

It is an **intentional aggressive behavior** from one person to another through electronic communication means.

### 4. Electronic Mediums (Tools used by bullies):

1. **E-mail**
2. **Electronic Forums**
3. **Instant Messaging (Chat)**
4. **Blogs**
5. **Social Media Sites** (like Facebook)

### 5. Forms of Cyber Bullying (Key Terms):

1. **Anonymity (Electronic Hiding):** Using fake names to hide identity and escape punishment.

2. **Harassment:** Sending hostile messages directed at one or more

people.



3. **Cyber Stalking:** Repeated harassment where the bully tracks the victim across all platforms.
4. **Flaming:** Posting vulgar and hostile words against someone.
5. **Outing (Electronic Defamation):** Posting insulting or private information about someone.
6. **Exclusion:** Ignoring or blocking someone intentionally in electronic groups.
7. **Cyber Threats:** Sending messages that contain threats or warnings of harm.
6. How to Protect Yourself (Safe Usage Rules):
  - **Never share your password** with anyone.
  - Create a **strong password** (Numbers + Letters + Special characters, more than 8 digits).
  - Do not post **private data** (home address, daily activities).
  - **Do not delete** bullying messages (they are evidence).
  - Never meet someone you only know through the internet.
  - Do not send messages while you are **angry**.
  - Tell your **parents** if someone bothers you.
  - Download software only under the supervision of teachers or parents.

### A) Write (T) for True or (F) for False:

1. Cyber bullying is an unintentional behavior that happens by mistake. ( )
2. Sharing your password with a close friend is safe and recommended. ( )
3. "Flaming" involves posting vulgar and hostile words against others. ( )
4. It is better to delete bullying messages immediately to forget about them. ( )
5. A strong password should be easy to guess, like your name and birth year. ( )

### B) Choose the correct answer:

1. Using pseudonyms (fake names) to hide a bully's identity is called:  
A) Flaming B) Anonymity C) Exclusion D) Outing
2. Intentionally ignoring someone in an online group or chat is:  
A) Cyber Threats B) Harassment C) Exclusion D) Cyber Stalking
3. Which of the following is a safe rule for the internet?  
A) Meet strangers                      B) Post family photos  
C) Keep evidence                        D) Share passwords
4. Repeatedly following and harassing a specific person across all platforms is: A) Outing B) Flaming C) Cyber Stalking D) Anonymity
5. To create a strong password, it should contain at least:  
A) 4 letters    B) 8 characters    C) your birthday    D) 123456

### C) Complete the sentences using:

( Flaming - Parents - Anonymity - Outing - Privacy )

1. Using fake names to hide from being caught is known as .....
2. Posting insulting information about a specific person is called .....
3. If you are bullied online, you should immediately inform your .....
4. .... refers to the use of hostile and vulgar words in electronic communication.
5. Posting your home address on Facebook is a violation of your own

**A) Write (T) for True or (F) for False:**

1. Cyber stalking is a repeated form of electronic harassment. ( )
2. Downloading software from unknown sites can infect your PC with viruses. ( )
3. You should always reply to a bully with an angry message. ( )
4. "Exclusion" means sending threats via E-mail. ( )
5. Privacy violation is one of the risks of using the internet. ( )

**B) Choose the correct answer:**

1. Sending messages that contain a warning of harm to someone is:  
A) Cyber Threats B) Flaming C) Exclusion D) Anonymity
2. When someone steals your social media account, it is called:  
A) Anonymity B) Identity Theft C) Flaming D) Exclusion
3. If a friend asks for your password to send a quick email, you should:  
A) Give it to him B) Refuse politely C) Write it on a paper D) Change it later
4. Which of these is an electronic medium used for bullying?  
A) Books B) Social Media C) Radio D) Newspapers
5. Keeping bullying messages helps as ..... against the bully.  
A) A gift B) Evidence C) A game D) A secret

**C) Complete the sentences using:**

( Harassment - Strong - Angry - Identity Theft - Viruses )

1. Stealing someone's account or pretending to be them is .....
2. You should avoid sending any electronic messages while you are .....
3. Sending hostile messages against a person or more is called .....
4. A ..... password should include letters, numbers, and special symbols.
5. Downloading unknown files can lead to the infection of your device with

**A) Write (T) for True or (F) for False:**

1. Cyber bullying can only happen through E-mail. ( )
2. "Outing" is a form of cyber bullying that involves defamation. ( )
3. It is safe to meet someone you met in a chat room without telling your parents. ( )
4. An aggressive behavior via the internet is called Cyber Bullying. ( )
5. You should change your password periodically to stay safe. ( )

**B) Choose the correct answer:**

1. Tracking a person in all electronic mediums is known as:  
A) Cyber Stalking B) Exclusion C) Flaming D) Anonymity
2. Posting photos of your family's daily activities can lead to:  
A) Better security B) Cyber Bullying/Theft C) More friends D) Good luck
3. If you get a suspicious message from a stranger, you should:  
A) Reply to it B) Open the link C) Ignore/Report it D) Send your photo
4. Cyber bullying is a/an ..... aggressive behavior.  
A) Accidental B) Intentional C) Friendly D) Random
5. Ethics on the internet are important for .....  
A) Only kids B) Only bullies C) Everyone D) Only teachers

**C) Complete the sentences using:**

**( Evidence - Cyber Bullying - Supervisor - Privacy - Exclusion )**

1. .... is intentional aggressive behavior via electronic media.
2. Ignoring a person in a chat group is an example of .....
3. Deleting bullying messages means you have lost the ..... of the attack.
4. You should download programs only under the help of a ..... or parent.
5. Information like your phone number and address are part of your .....

**General Exam - Model 1****A) Write (T) for True or (F) for False:**

1. The Do While...Loop is used when the number of repetitions is known. ( )
2. Sharing your password with others is a safe practice. ( )
3. The symbol <> means "Not Equal" in Visual Basic. ( )
4. A Function must return a value using the Return keyword. ( )
5. Flowcharts use standard symbols to represent algorithm steps. ( )

**B) Choose the correct answer:**

1. Which property allows a TextBox to accept multiple lines of text?  
A) Name B) Text C) MultiLine D) Font
2. The values used in the procedure header to receive data are:  
A) Parameters B) Arguments C) Variables D) Constants
3. In For I = 1 To 10 Step 2, the loop repeats ..... times.  
A) 10 B) 2 C) 5 D) 1
4. Intentionally ignoring someone in an online group is called:  
A) Flaming B) Exclusion C) Outing D) Anonymity

**C) Complete the sentences using:**

**( Mod - Flowchart - Sub - Strong - Index )**

1. A ..... is a diagram that shows the steps of solving a problem.
2. The ..... operator returns the remainder of a division.
3. An ..... procedure does not return any value.
4. To secure your account, you must use a ..... password.
5. The first item in a ComboBox has an ..... of 0.

**General Exam - Model 2****A) Write (T) for True or (F) for False:**

1. ByVal means the procedure receives a copy of the argument's value. ( )
2. Flaming means posting hostile and vulgar words online. ( )
3. The If...Then...Else statement provides two paths for execution. ( )
4. VbCrLf is used to join two text boxes into one. ( )
5. All symbols in a flowchart must be connected by flow lines. ( )

**B) Choose the correct answer:**

1. Which keyword marks the end of a Select Case block?  
A) End If B) End Select C) Stop Case D) Next
2. Cyber stalking is a form of ..... harassment.  
A) Random B) Repeated C) Friendly D) Accidental
3. To find the result of  $10 \text{ Mod } 3$ , the value is:  
A) 1 B) 3 C) 0 D) 10
4. A procedure that returns a value is called:  
A) Sub B) Event C) Function D) Method

**C) Complete the sentences using:**

( Flaming - Algorithm - Loop - Privacy - Return )

1. The ..... is a set of logical steps to solve a specific problem.
2. We use the ..... keyword to specify the value a function sends back.
3. A ..... is used to repeat a specific code several times.
4. Posting your family's private photos is a violation of .....
5. .... involves using vulgar language against others on the internet.

**General Exam - Model 3****A) Write (T) for True or (F) for False:**

1. A Sub can be used as part of a mathematical equation. ( )
2. "Outing" is posting insulting information about a person. ( )
3. In flowcharts, the rectangle symbol represents a "Decision". ( )
4. SelectedIndex returns the position of the selected item in a list. ( )
5. For  $I = 5$  To 1 will work correctly without a negative Step. ( )

**B) Choose the correct answer:**

1. Which symbol is used for "Input" or "Output" in a flowchart?  
A) Rectangle B) Oval C) Parallelogram D) Diamond
2. Stealing someone's identity online is called:  
A) Exclusion B) Identity Theft C) Anonymity D) Flaming
3. The event that triggers when you choose a new item in a ComboBox is:  
A) Click B) SelectedIndexChanged C) Load D) TextChanged
4. If  $I = 1$ , what is the result of  $I = I + 2$ ?  
A) 1      B) 2      C) 3      D) 5

**C) Complete the sentences using:**

**( Logic - Try...Catch - Me - Evidence - Parameters )**

1. The ..... block is used to handle errors during program execution.
2. The keyword ..... refers to the current active Form.
3. Keeping bullying messages serves as ..... against the attacker.
4. Variables in the procedure definition are called .....
5. A ..... error happens when the program produces wrong results.

**General Exam - Model 4****A) Write (T) for True or (F) for False:**

1. End Function is used to start a new function. ( )
2. Cyber bullying is intentional aggressive behavior. ( )
3. The default value of Step in a For loop is 1. ( )
4. Flowcharts must have a "Start" and an "End" symbol. ( )
5. MsgBox can only be used to display numbers. ( )

**B) Choose the correct answer:**

1. To repeat code as long as a condition is True, we use:  
A) For...Next B) Do While C) If...Then D) Select Case
2. Which operator means "Greater than or Equal"?  
A) => B) =< C) >= D) <>
3. Telling your parents about an online bully is a ..... action.  
A) Positive B) Negative C) Wrong D) Dangerous
4. The result of a conditional expression is always:  
A) Number B) True or False C) Text D) Symbol

**C) Complete the sentences using:****( Sub - Decision - Constants - Argument - Cyber Bullying )**

1. The Diamond symbol in a flowchart represents a .....
2. The actual value sent to a procedure is called an .....
3. .... are values that do not change during program execution.
4. A ..... is a block of code that performs a task without returning a value.
5. Sending threats via E-mail is a form of .....

**General Exam - Model 5****A) Write (T) for True or (F) for False:**

1. The For...Next loop checks the condition after each Next. ( )
2. Identity theft means someone pretending to be you online. ( )
3. You can use any name for a variable, even if it's a reserved keyword. ( )
4. An algorithm is the first step in solving a problem. ( )
5. ListBox1.Items.Add is used to delete an item from the list. ( )

**B) Choose the correct answer:**

1. What happens if the If condition is False and there is no Else?  
A) Error B) Code repeats C) Skips to End If D) Program stops
2. Using fake names online to hide identity is called:  
A) Outing B) Flaming C) Anonymity D) Stalking
3. The property that stores the text displayed on a Button is:  
A) Name B) Text C) ID D) Visible
4. If Start = 10 and End = 1, the Step must be:  
A) Positive B) Negative C) Zero D) Two

**C) Complete the sentences using:**

**( VbCrLf - Function - Harassment - Parallelogram - Flowchart )**

1. The ..... symbol is used for inputting data like "Read X".
2. A ..... is used to calculate and return a result.
3. Sending hostile messages to a person is called .....
4. To start a new line in a MsgBox, we use .....
5. A ..... helps in explaining the program to others.

**General Exam - Model 6****A) Write (T) for True or (F) for False:**

1. Logic errors cause the program to crash during runtime. ( )
2. "Exclusion" is intentionally leaving someone out of an online group. ( )
3. The Dim keyword is used to declare variables. ( )
4. A function can return more than one value using Return. ( )
5. For I = 1 To 5 will execute the code 5 times. ( )

**B) Choose the correct answer:**

1. Which symbol is used for "Process" or "Assignment"?  
A) Oval B) Rectangle C) Diamond D) Parallelogram
2. Sending electronic messages that carry threats is:  
A) Cyber Threats B) Flaming C) Outing D) Anonymity
3. To handle an exception (error), we use:  
A) If...Then B) Try...Catch C) Select Case D) For...Next
4. The first step in creating a program is:  
A) Writing code B) Defining the problem C) Testing D) Documentation

**C) Complete the sentences using:**

**( Mod - Parameters - Logic - Flaming - True )**

1. If the conditional expression is met, its value is .....
2. Using vulgar words in a chat room is called .....
3. Errors in the way we write code are called Syntax errors, while wrong results are .....
4. The ..... operator is useful for checking if a number is even.
5. We define ..... in the procedure header to receive data from



**General Exam - Model 7****A) Write (T) for True or (F) for False:**

1. You should change your passwords every once in a while. ( )
2. End Sub is placed at the beginning of a procedure. ( )
3. The Do While loop is a type of selection structure. ( )
4. Flow lines show the direction of steps in a flowchart. ( )
5. A strong password should be at least 8 characters long. ( )

**B) Choose the correct answer:**

1. To repeat a loop 4 times, we use:  
A) For I = 1 To 4 B) For I = 0 To 4 C) For I = 1 To 3 D) For I = 4 To 1
2. Posting insulting information about someone is:  
A) Outing B) Anonymity C) Exclusion D) Flaming
3. Which tool is used to choose one item from a drop-down list?  
A) Label B) ComboBox C) Button D) TextBox
4. Return X + Y is used inside a:  
A) Sub B) Function C) Flowchart D) Variable

**C) Complete the sentences using:**

**( Oval - Evidence - Mod - & - Argument )**

1. The ..... symbol is used for the "Start" and "End" of a flowchart.
2. The ..... operator calculates the remainder of division.
3. To link two strings together, we use the ..... symbol.
4. The actual value used when calling a procedure is the .....
5. Not deleting bullying messages provides ..... of the attack.

**General Exam - Model 8****A) Write (T) for True or (F) for False:**

1. You can meet a stranger from the internet without telling anyone. ( )
2. A procedure name should ideally describe what it does. ( )
3. If  $X > 10$  Then is a complete statement on its own. ( )
4. The Next statement increases the counter in a For loop. ( )
5. Software theft is one of the risks of using the internet. ( )

**B) Choose the correct answer:**

1. Which error happens when you divide a number by zero?  
A) Logic Error B) Syntax Error C) Runtime Error D) No Error
2. Repeatedly tracking a person online is called:  
A) Cyber Stalking B) Flaming C) Anonymity D) Exclusion
3. In Select Case, we use ..... for cases not listed.  
A) Case Else B) Case Other C) Case End D) Default
4. The Items.Clear() method belongs to:  
A) TextBox B) ListBox C) Label D) Form

**C) Complete the sentences using:****( Algorithm - Strong - Sub - Index - Do While )**

1. A ..... password contains letters, numbers, and symbols.
2. .... is a sequence of logical steps to solve a problem.
3. The ..... loop repeats as long as the condition is True.
4. In a ComboBox, each item has a unique ..... starting from zero.
5. A ..... is used to execute code that does not return a value.

**General Exam - Model 9****A) Write (T) for True or (F) for False:**

1. The Items.Add method adds a new item to the end of a list. ( )
2. Anonymity means using your real name to harass others. ( )
3. Flowcharts help programmers document their work. ( )
4. ByVal is the default way to pass parameters in VB.net. ( )
5. VbCrLf moves the cursor to the next line. ( )

**B) Choose the correct answer:**

1. To declare a function that returns a decimal, we use:  
A) As Integer B) As String C) As Single D) As Boolean
2. Intentional aggressive behavior online is:  
A) Cyber Bullying B) Social Media C) E-mail D) Chatting
3. Which loop is used when the number of repetitions is known?  
A) Do While B) For...Next C) If...Then D) Select Case
4. To get a value from a TextBox, we use the ..... property.  
A) Name B) Text C) Visible D) Enabled

**C) Complete the sentences using:**

( Flowchart - Identity Theft - Sub - Arguments - Return )

1. Stealing an E-mail account is a form of .....
2. A ..... uses symbols to represent algorithmic steps.
3. We send ..... to a procedure when we call it.
4. A ..... is a procedure that does not use the Return statement.
5. A function must contain at least one ..... statement.

**General Exam - Model 10****A) Write (T) for True or (F) for False:**

1. Sharing passwords makes accounts more secure. ( )
2. For I = 1 To 10 Step 2 will include the number 2. ( )
3. The Diamond symbol has only one flow line entering it. ( )
4. Try...Catch prevents the program from crashing due to errors. ( )
5. "Exclusion" is a positive way to deal with cyber bullies. ( )

**B) Choose the correct answer:**

1. What is the value of 15 Mod 4?  
A) 1 B) 2 C) 3 D) 4
2. Posting family secrets online is a risk to your:  
A) Computer B) Privacy C) Internet speed D) Screen
3. In For I = 1 To 5, what is the value of I after the loop finishes?  
A) 5 B) 6 C) 1 D) 0
4. To display a message box, we use the command:  
A) ShowBox B) MessageBox C) MsgBox D) PrintBox

**C) Complete the sentences using:****( Logic - Flaming - Sub - Algorithm - Mod )**

1. An ..... is the logical plan to solve a problem.
2. If your program calculates the area of a circle as a negative number, you have a ..... error.
3. Using hostile words in a forum is called .....
4. The ..... operator finds the remainder of division.
5. A ..... procedure is called by its name to perform a specific task.

تطبيق



مذكرات جاهزة للطباعة

لتحميل الملفات التعليمية مجاناً للمعلم والطالب

مذكرات وملازم / مراجعات وملخصات / امتحانات / كتب الوزارة /  
أدلة المعلم / دفاتر التحضير / سجلات مدرسية / أوراق تأسيس

امسح الكود بموبايلك علشان تقدر تثبت التطبيق

وتقدر ف أي وقت تحمّل ال نفسك فيه ببلاش

هيغنيك عن البحث والجروبات والقنوات الكثيرة

