

بنك اسئلة

الصف  
السادس  
الابتدائي  
٢٠٢٤

# التميز

أ/ محمود سعيد

ELMotamyez Questions Bank

# ICT

February Revision

BY

MRS . Suzy Atef

نسخة  
مجانية

ملحق الإجابات  
بالداخل



El.Motamyez.School

يمكنكم الحصول على المذكرات والاختبارات من خلال مسح رمز ال QR Code  
أو من خلال صفحة "التميز - أ/ محمود سعيد".  
يرجى مراعاة حقوق صاحب المحتوى عند النشر.



## Lesson 02

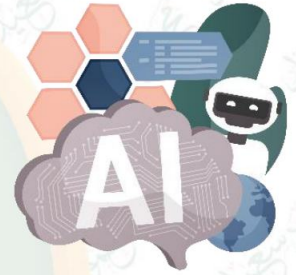
## Ethics of Using Artificial Intelligence



**Artificial Intelligence (AI):** It is technology that is able to use human traits of problem-solving, reasoning, and decision-making to perform tasks.

## Some common AI tools :

Tool	Usage
✓ Facial Recognition	Unlock your devices
✓ Navigation Apps	Guide you to a destination
✓ Smart Home Devices (such as smart thermostats)	Regulate temperature
✓ Digital Voice Assistants	Respond to questions/requests
✓ Email Spam Filters	Prevent dangerous email from reaching your inbox
✓ Social Media Sites	Make connection suggestions to users
✓ Chat Windows on Websites	provide responses from 'chatbots'
✓ Interactive Learning Programs	personalized for each user's unique abilities
✓ Language Processing Tools	Provide information - Formulate your writing or responses (texts, emails, coding, and essays)

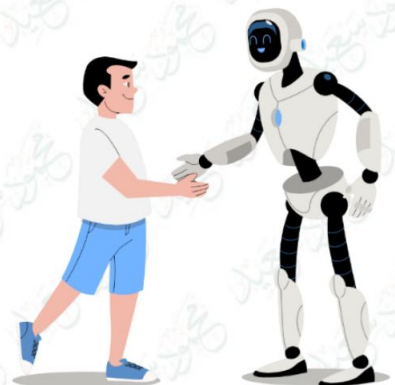


Artificial intelligence (AI) depends on algorithms to teach it how to learn to problem-solve, use reasoning and make decisions.

## The Ethics for AI designers

**Inclusive:** AI tools should be inclusive to all users, not just a select group.

**Unbiased:** Data should be based on fact, not opinion or personal views.

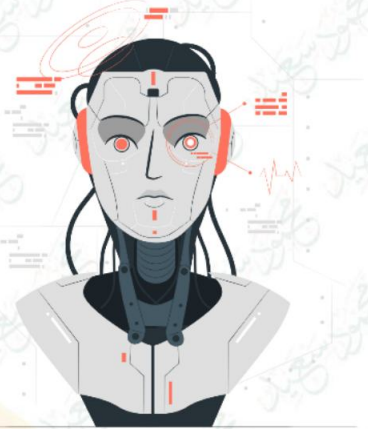


**Beneficial:** AI tools should be used to help society, not to take advantage of it.

**Transparent:** Be willing to explain how the AI tools work.

**Protective:** User privacy and security must be considered when designing AI tools.

**Accountable:** If an AI tool doesn't work as it should, admit the mistake, determine what went wrong and explain what is being done to fix it.



- Users of AI should also be ethical, using AI tools to help themselves, others, and society.
- Do not use AI tools to invade people's privacy, cheat or cause harm.
- Language processing tools are invaluable resources, but they can be misused to plagiarize work, create misinformation and impersonate people.
- Users must ensure that the AI tool's developer follow a code of ethics.

## Lesson 03

## E-Commerce



**E-commerce:** is the buying and selling of goods and services on the internet.

- ✓ There are many online shops. It can be a bit **overwhelming** for some consumers.
- ✓ Experienced consumers use technological research tools to help them make the best purchasing decisions.

**Some technological research tools that for shopping online:**

Search Engines

Comparison Websites

Online Reviews

### 1 - Search Engines

Search engines can be used to find information, including **product** and **website information**.

They provide articles about products, and links to relevant shopping sites.

They can help **consumers** make their decisions.



## 2 - Comparison Websites

Consumers use comparison websites to help them **compare products**. Comparisons could be based on **price**, or **quality** of the product.



## 3 - Online Reviews

Online reviews by consumers, or even friends or family members on social media, can also be valuable.

Consumers need to be careful. Some reviews may be fake or exaggerated. Information from family and friends is always a helpful way to evaluate potential purchases.



## Stocks and bonds

**A stock exchange** : is a market where people can buy and sell shares (stocks).

**The shares**: are equal parts into which the ownership of the company is divided.

**Stocks** give the individual a **percentage of ownership** in a company.

The individual **makes** or **loses money** depending on the company's performance and activity. This process can be quite **risky**.

Companies may **lose** business and money because of **competitors** or **reviews**.

**Negative online news stories** (including rumors and lies) can also affect companies' business.

Companies can also sell **bonds** to help raise money.

Individuals may choose to purchase stocks to support a company they trust.

For example, a person might want to invest in a green company that helps to preserve the environment.

Stocks and bonds can be bought, managed, and sold through **trusted** and **official websites**.



## Lesson 04

## Communicating with Educational Service Providers



## Educational service providers (ESPs) include:

## Profit organizations

## Non-profit organizations

- ESPs provide educational support.
- They are sources of information which a student can potentially learn from.

ESPs may include:

## Online libraries

## Educational publishing sites

## Online museums

Alexandria Library and Egyptian Knowledge Bank are two well-known ESPs.

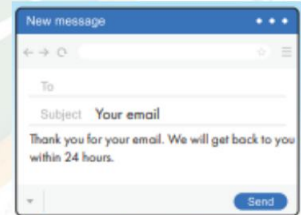
You can contact ESPs:

## Formally (Email)

## Less formally (Chat windows)

## E-mail

- ✓ You can contact ESPs to help you with research or other educational needs.
- ✓ For example, you can send an email request. It's important to be formal when writing to an ESP.
- ✓ Sometimes you may get an automatically generated reply thanking you for your email, and letting you know when you will receive a reply.



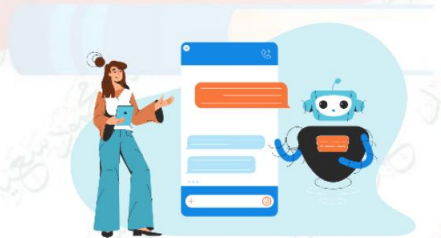
## Chat windows

You can also communicate with some ESPs using **chat windows**, if they are included on their website. Here, you can be a bit **less formal**. However, you must still be **polite** and also be **clear** in your request.

Chat windows usually have **chatbots** for responses.

**Chatbots** : aren't real people. They are **artificial intelligence (AI) computer programs** designed to respond to questions online.

When communicating using chat windows, it's essential to be as **clear** and **focused** in your request as possible. Otherwise, you may not get an accurate or relevant response.



## Lesson 05

Computational  
Communication Tools

- There are other tools of cloud computing that you can use to communicate with everyone at the same time (real-time communication).

- **This can be done by using digital tools, such as:**

**Video chats**

**Live television shows**

**Instant chat rooms**

- Real-time communication often allows you to get your message across in a more engaging way.

- Two popular video conferencing platforms are:

**Microsoft Teams**



**Google Meet**



### Some tips for using video conferencing software via the Google Meet platform:

**To create a Meet:** Click on New Meeting. – Then click on the option that works for you. The option to **start a meeting instantly**, or to **create a meeting for later**.

Once you have created your meeting, copy the meeting link that Google provides. Share it with the meeting participants.

**To join a Meet**, there are two ways you can join a meeting:

- You can copy and paste **the invite link** into your browser.
- You can also enter the link into the **"Enter a code or link"** field. Then, click **Join**.

**Once you're in the Meet**, you will be asked to approve the use of the microphone and camera. Click on the microphone icon for audio and the camera icon for video. To turn off the camera or microphone, just click on the icon again.

**Before making a video conference**, remember to double check your connection and software. Fix any glitches.

**During your video conference**, remember that participants will be able to see you unless you turn off your camera. Dress appropriately, and be sure to smile and appear friendly. Check that your microphone is on when you're speaking, and mute it when you're not.

**After your video conference**, send a follow-up email. In your email, include a summary of the meeting or a link to the recording of the meeting if it was recorded.



## Lesson 06

## Programming and Digital Problems and How to Solve Them



## Programming languages

**Programming languages:** are commands that are provided in sentences for writing computer programs.

**HyperText Markup Language (HTML):** is a language commonly used to create web pages.

**Static web content** is set and **remains the same** to every user who visits the website.

**Dynamic web content** is content that can be **changed** based on the individual user's interactions with the app or website.

**HTML** is used to create **static** web content.

**JavaScript** is a programming language allows the creation of **dynamic** web content.



## Common digital problems

## Problem

## Possible solutions

## Corrupted file



- Check that the file downloaded correctly. If you're not sure, **delete** the corrupted file and **download** it again.
- Try opening the file using **another program**.
- Make sure your software version is **up-to-date**. If it isn't, run the necessary updates.

## Device won't charge



- Make sure your **charging cable** is functioning. If it isn't, **replace** it with a new cable.
- Be sure there are no issues with your **electricity** or **socket** at home.
- Check for **dust** and **water** in the charging port. Clean the port or remove the water by following the instructions from your device's provider (you can ask your teacher for help).



## Problem

### Forgotten password



## Possible solutions

- Click on the **link** that confirms you forgot your password. Follow the steps to create a **new password**.
- In the future, use a **password manager** application. Set up strong unique passwords for each account and remember the **master password** for the password manager.

### Accidental file deletion



- Make sure you can see the **“Recycle Bin”** or **“Trash”** feature on your computer, which **temporarily** stores deleted files.
- Regularly **back up** important files to an external hard drive, or cloud storage service.

### Error message When trying to save a file



- Make sure you're not using the name of **another file**.
- Check that you have the right to **access** the file storage location, such as a local hard drive or cloud storage.
- Check to see if your **file name** includes **“special characters”**, which can prevent the file from saving properly





## February Questions Bank



### Question 01

### choose the correct Answer

- 1 ..... are from the common AI tools, personalized for each user's unique abilities.
  - a Navigation apps
  - b Email spam filters
  - c Interactive learning programs
- 2 ..... uses human traits of problem-solving, reasoning, and decision-making to perform tasks.
  - a AR
  - b AI
  - c VR
- 3 You can use ..... technology to unlock your devices.
  - a navigation apps
  - b Paint app
  - c facial recognition
- 4 Navigation apps use ..... to guide you to a destination.
  - a AI
  - b VR
  - c AR
- 5 ..... help you formulating your writing or responses to something.
  - a Programming languages
  - b Language processing tools
  - c Learning programs
- 6 Digital voice assistants are primary used to ..... .
  - a regulate temperature
  - b cook food
  - c Respond to questions/requests
- 7 Smart thermostats are smart home devices that use AI to ..... .
  - a regulate temperature
  - b play music
  - c clean the room
- 8 Tools for processing language can be ..... Information sources.
  - a very harmful
  - b very useful
  - c dangerous
- 9 Chat windows are AI tools that provide responses from ..... .
  - a Virtual reality
  - b printers
  - c chatbots
- 10 Data used in AI should be based on ..... .
  - a personal views
  - b facts
  - c opinions



- 11 If an AI tool doesn't work as it should, you should .....
- (a) admit the mistake (b) blame the user (c) Ignore the mistake
- 12 ..... prevent dangerous email from reaching your inbox.
- (a) Chat windows (b) Navigation apps (c) Email spam filters
- 13 AI tools should be used to ..... society, not to take advantage of it.
- (a) harm (b) help (c) damage
- 14 Be sure the AI tool's designer or company ..... a code of ethics.
- (a) neglect (b) ignore (c) follow
- 15 Do not use ..... to invade people's privacy, cheat, or cause harm.
- (a) AI tools (b) editing tools (c) paint tools
- 16 Search engines, comparison websites and ..... are technological research tools.
- (a) Facebook (b) Online reviews (c) shares
- 17 ..... is the buying and selling of goods and services on the internet.
- (a) E-commerce (b) E-learning (c) Stock exchange
- 18 ..... have links to relevant shopping sites.
- (a) Comments (b) Animations (c) Search engines
- 19 Consumers use ..... to compare products.
- (a) comparison websites (b) Google (c) social media
- 20 Experienced consumers use ..... to help them make purchasing decisions.
- (a) guesses (b) research tools (c) negative stories
- 21 Consumers should be careful because Some reviews may be .....
- (a) fake (b) exaggerated (c) both a and b
- 22 Comparisons could be based on ..... of the product.
- (a) price (b) quality (c) both a and b
- 23 ..... give the individual a percentage of ownership in a company.
- (a) Reviews (b) Stocks (c) Bonds
- 24 A market for buying and selling stocks is called .....
- (a) goods exchange (b) bonds (c) stock exchange



- 25 Companies can sell ..... to raise money.  
 (a) bonds (b) stocks (c) reviews
- 26 ..... are equal parts into which the ownership of a company is divided.  
 (a) reviews (b) bonds (c) shares
- 27 Consumers use comparison websites to .....  
 (a) read news (b) play games (c) compare products
- 28 A person who wants to help the environment invest in ..... company.  
 (a) outboard (b) green (c) fast food
- 29 When communicating using chat windows, it is necessary to be .....  
 (a) aggressive (b) funny (c) clear
- 30 ..... are sources of information which a student can potentially learn from.  
 (a) ISPs (b) ESPs (c) Online shopping sites
- 31 You can communicate with ESPs .....  
 (a) formally (b) less formally (c) both a and b
- 32 After sending an email to an ESP, you may receive .....  
 (a) automatically generated reply (b) instant response (c) personal phone call
- 33 Educational Service Providers (ESPs) include ..... organizations.  
 (a) profit (b) non-profit (c) both a and b
- 34 You can contact ESPs using .....  
 (a) E-mail (b) chat window (c) both a and b
- 35 When writing to an ESP, It is important to be .....  
 (a) formal (b) informal (c) funny
- 36 You can contact ESPs formally using .....  
 (a) E-mail (b) chat window (c) phone call
- 37 ..... is not typically included in a formal email to an ESP.  
 (a) Greeting (b) Emojis (c) Email address



- 38 Chatbots are .....
- (a) AI software (b) real people (c) antivirus
- 39 ..... is not a video conference platform.
- (a) Google Meet™ (b) Microsoft Teams (c) Instant chat rooms
- 40 After creating your meeting, copy a ..... that has been provided.
- (a) text (b) link (c) page
- 41 To create a meeting in Google Meet, Click on .....
- (a) new meeting (b) Join meeting (c) leave meeting
- 42 When you aren't speaking in an online meeting, it is recommended to ..... the microphone.
- (a) turn on (b) mute (c) remove
- 43 Once you're in the Meet, you should ..... the use of microphone and camera.
- (a) approve (b) remove (c) ignore
- 44 Google Meet™ is a .....
- (a) search engine (b) email service (c) video conference app
- 47 The basic tools in Microsoft Teams and Google Meet are .....
- (a) similar (b) different (c) variable
- 48 After creating a meeting, you should ..... the meeting link.
- (a) copy (b) share (c) both a and b
- 49 The follow-up email after video conference should include a ..... of the meeting.
- (a) recipe (b) summary (c) complaint
- 50 To create a site with regularly updated information, programmers use .....
- (a) HTML (b) Email (c) JavaScript
- 51 If your device won't charge, you should check .....
- (a) charging cable (b) home's electricity (c) both a and b
- 52 ..... is content that remains the same to every user who visits the website.
- (a) static content (b) dynamic content (c) interactive content



- 53 The web Content that changes based on user interactions is called .....
- (a) static content      (b) dynamic content      (c) fixed content
- 54 To prevent accidental file deletion, you should .....
- (a) Delete files regularly      (b) Ignore important files      (c) Regularly back up important files
- 55 If a file is corrupted, you can .....
- (a) Delete it and download it again      (b) Open it with another program      (c) both a and b
- 56 ..... are instructions that are provided in code for writing computer programs.
- (a) programming languages      (b) computer hardware      (c) software applications
- 57 HTML is commonly used for creating .....
- (a) AI software      (b) web pages      (c) mobile app

## Question 02

## put ( √ ) or ( × )

- 1 You should use AI tools to invade people's privacy, cheat, or cause harm. ( )
- 2 Digital voice assistants respond only to emails. ( )
- 3 Navigation apps use AI to guide you to your destination. ( )
- 4 Users of AI do not need to be ethical. ( )
- 5 Email Spam Filters can help harmful Emails reach your inbox. ( )
- 6 AI uses human traits like problem-solving and reasoning to perform tasks. ( )
- 7 Chatbots on websites provide responses through chat windows. ( )
- 8 User privacy and security are important when designing AI tools. ( )
- 9 AI designers must ignore ethical usage. ( )
- 10 AI tools should be inclusive to all users. ( )
- 11 When designing AI tool, data should not be based on fact. ( )
- 12 Language Processing Tools can be used to plagiarize work. ( )
- 13 AI tools are not used in writing essays. ( )
- 14 It's not necessary to protect yourself online when using AI tools. ( )
- 15 AI tools should be beneficial and used to help society. ( )



- 16 Websites that compare products can help consumers. ( )
- 17 Rumors and lies are negative online news stories affect companies. ( )
- 18 Comparisons websites are only based on the color of the product. ( )
- 19 Shares represent equal parts of a company's ownership. ( )
- 20 Search engines can only provide information about product prices. ( )
- 21 Companies may sell bonds to raise money. ( )
- 22 Reviews by family and friends are not useful in evaluating products ( )
- 23 Technological research tools, like search engines, provide link to relevant shopping sites. ( )
- 24 Online reviews are always accurate and trustworthy. ( )
- 25 A search engine provides quick and short product descriptions for consumers. ( )
- 26 Search engines do not provide links to relevant shopping sites. ( )
- 27 Stocks/shares do not involve any risk. ( )
- 28 Consumers use comparison websites to help them compare products. ( )
- 29 You can ask ESPs help with research. ( )
- 30 Chat windows have chatbots for responses. ( )
- 31 When writing to an ESP, it's not important to be formal. ( )
- 32 Sending an email request is a way to contact ESPs. ( )
- 33 Chatbots in chat windows are real people. ( )
- 34 Online museums can be considered as ESPs. ( )
- 35 The only way to contact ESPs is through email. ( )
- 36 When communicating with ESPs, it's necessary to be clear and focused. ( )
- 37 When writing an email, it is necessary to include greetings and closing messages. ( )
- 38 Contacting ESPs more formally involves using chat windows. ( )
- 39 Students cannot learn online from ESPs. ( )
- 40 You can create a database by using Google Meet. ( )
- 41 Microsoft Teams and Google Meet are video conferencing platforms. ( )
- 42 Participants can see you if you turn off your camera. ( )



- 43 You can join a meeting by entering the invite link. ( )
- 44 Video conference is not a means of real-time communication. ( )
- 45 You should mute your microphone when you're not speaking. ( )
- 46 No need to check connection and software before a video call. ( )
- 47 You can turn off the microphone or camera by clicking on the icon again. ( )
- 48 You can include a summary of the meeting in your follow-up email. ( )
- 49 Sending a follow-up email after a video conference is not necessary ( )
- 50 You can't include meeting recording link in your follow-up email. ( )
- 51 HTML is used to create static web content. ( )
- 52 JavaScript can't be used to create dynamic web content. ( )
- 53 Programming languages are used to write computer programs. ( )
- 54 Using the name of another file when trying to save a file can cause an error. ( )
- 55 Dynamic web content remains the same for every user. ( )
- 56 Corrupted files can be fixed by simply re-downloading them. ( )
- 57 If file name includes special characters, It may give error message. ( )
- 58 Using a password manager is not a reliable solution for managing passwords. ( )
- 59 Dust and water in the charging port can prevent a device from charging. ( )
- 60 You should regularly update your programs to prevent corrupted files. ( )

انتهت الأسئلة مع أطيّب الامنيات بالنجاح والتوفيق

### Lesson

Theme 3 Lesson 2  
Theme 3 Lesson 3  
Theme 3 Lesson 4  
Theme 3 Lesson 5  
Theme 3 Lesson 6

### Choose the correct answer

From Q1 to Q15  
From Q16 to Q28  
From Q29 to Q39  
From Q40 to Q50  
From Q51 to Q60

### Put (T) or (F)

From Q1 to Q15  
From Q16 to Q28  
From Q29 to Q39  
From Q40 to Q50  
From Q51 to Q60



### Please note that:

Theme 3 – Lesson 1 is enrichment (اثرائي للاطلاع فقط)

By: Mrs Suzy Atef



بنك اسئلة

الصف  
السادس  
الابتدائي  
٢٠٢٤

# التميز

أ/ محمود سعيد



Model Answers

# ICT

February Revision

BY

MRS . Suzy Atef

6

الصف  
السادس



El.Motamyez.School

يمكنكم الحصول على المذكرات والاختبارات من خلال مسح رمز ال QR Code  
أو من خلال صفحة "التميز - أ/ محمود سعيد".  
يرجى مراعاة حقوق صاحب المحتوى عند النشر.



## February Questions Bank



### Question 01

### choose the correct Answer

- 1 ..... are from the common AI tools, personalized for each user's unique abilities.
  - a Navigation apps
  - b Email spam filters
  - c **Interactive learning programs**
- 2 ..... uses human traits of problem-solving, reasoning, and decision-making to perform tasks.
  - a AR
  - b **AI**
  - c VR
- 3 You can use ..... technology to unlock your devices.
  - a navigation apps
  - b Paint app
  - c **facial recognition**
- 4 Navigation apps use ..... to guide you to a destination.
  - a **AI**
  - b VR
  - c AR
- 5 ..... help you formulating your writing or responses to something.
  - a Programming languages
  - b **Language processing tools**
  - c Learning programs
- 6 Digital voice assistants are primary used to ..... .
  - a regulate temperature
  - b cook food
  - c **Respond to questions/requests**
- 7 Smart thermostats are smart home devices that use AI to ..... .
  - a **regulate temperature**
  - b play music
  - c clean the room
- 8 Tools for processing language can be ..... Information sources.
  - a very harmful
  - b **very useful**
  - c dangerous
- 9 Chat windows are AI tools that provide responses from ..... .
  - a Virtual reality
  - b printers
  - c **chatbots**
- 10 Data used in AI should be based on ..... .
  - a personal views
  - b **facts**
  - c opinions





- 11 If an AI tool doesn't work as it should, you should .....
- (a) admit the mistake (b) blame the user (c) Ignore the mistake
- 12 ..... prevent dangerous email from reaching your inbox.
- (a) Chat windows (b) Navigation apps (c) Email spam filters
- 13 AI tools should be used to ..... society, not to take advantage of it.
- (a) harm (b) help (c) damage
- 14 Be sure the AI tool's designer or company ..... a code of ethics.
- (a) neglect (b) ignore (c) follow
- 15 Do not use ..... to invade people's privacy, cheat, or cause harm.
- (a) AI tools (b) editing tools (c) paint tools
- 16 Search engines, comparison websites and ..... are technological research tools.
- (a) Facebook (b) Online reviews (c) shares
- 17 ..... is the buying and selling of goods and services on the internet.
- (a) E-commerce (b) E-learning (c) Stock exchange
- 18 ..... have links to relevant shopping sites.
- (a) Comments (b) Animations (c) Search engines
- 19 Consumers use ..... to compare products.
- (a) comparison websites (b) Google (c) social media
- 20 Experienced consumers use ..... to help them make purchasing decisions.
- (a) guesses (b) research tools (c) negative stories
- 21 Consumers should be careful because Some reviews may be .....
- (a) fake (b) exaggerated (c) both a and b
- 22 Comparisons could be based on ..... of the product.
- (a) price (b) quality (c) both a and b
- 23 ..... give the individual a percentage of ownership in a company.
- (a) Reviews (b) Stocks (c) Bonds
- 24 A market for buying and selling stocks is called .....
- (a) goods exchange (b) bonds (c) stock exchange



- 25 Companies can sell ..... to raise money.  
 (a) bonds (b) stocks (c) reviews
- 26 ..... are equal parts into which the ownership of a company is divided.  
 (a) reviews (b) bonds (c) shares
- 27 Consumers use comparison websites to .....  
 (a) read news (b) play games (c) compare products
- 28 A person who wants to help the environment invest in ..... company.  
 (a) outboard (b) green (c) fast food
- 29 When communicating using chat windows, it is necessary to be .....  
 (a) aggressive (b) funny (c) clear
- 30 ..... are sources of information which a student can potentially learn from.  
 (a) ISPs (b) ESPs (c) Online shopping sites
- 31 You can communicate with ESPs .....  
 (a) formally (b) less formally (c) both a and b
- 32 After sending an email to an ESP, you may receive .....  
 (a) automatically generated reply (b) instant response (c) personal phone call
- 33 Educational Service Providers (ESPs) include ..... organizations.  
 (a) profit (b) non-profit (c) both a and b
- 34 You can contact ESPs using .....  
 (a) E-mail (b) chat window (c) both a and b
- 35 When writing to an ESP, It is important to be .....  
 (a) formal (b) informal (c) funny
- 36 You can contact ESPs formally using .....  
 (a) E-mail (b) chat window (c) phone call
- 37 ..... is not typically included in a formal email to an ESP.  
 (a) Greeting (b) Emojis (c) Email address



- 38 Chatbots are .....
- (a) AI software (b) real people (c) antivirus
- 39 ..... is not a video conference platform.
- (a) Google Meet™ (b) Microsoft Teams (c) Instant chat rooms
- 40 After creating your meeting, copy a ..... that has been provided.
- (a) text (b) link (c) page
- 41 To create a meeting in Google Meet, Click on .....
- (a) new meeting (b) Join meeting (c) leave meeting
- 42 When you aren't speaking in an online meeting, it is recommended to ..... the microphone.
- (a) turn on (b) mute (c) remove
- 43 Once you're in the Meet, you should ..... the use of microphone and camera.
- (a) approve (b) remove (c) ignore
- 44 Google Meet™ is a .....
- (a) search engine (b) email service (c) video conference app
- 47 The basic tools in Microsoft Teams and Google Meet are .....
- (a) similar (b) different (c) variable
- 48 After creating a meeting, you should ..... the meeting link.
- (a) copy (b) share (c) both a and b
- 49 The follow-up email after video conference should include a ..... of the meeting.
- (a) recipe (b) summary (c) complaint
- 50 To create a site with regularly updated information, programmers use .....
- (a) HTML (b) Email (c) JavaScript
- 51 If your device won't charge, you should check .....
- (a) charging cable (b) home's electricity (c) both a and b
- 52 ..... is content that remains the same to every user who visits the website.
- (a) static content (b) dynamic content (c) interactive content





- 53 The web Content that changes based on user interactions is called .....
- (a) static content (b) dynamic content (c) fixed content
- 54 To prevent accidental file deletion, you should .....
- (a) Delete files regularly (b) Ignore important files (c) Regularly back up important files
- 55 If a file is corrupted, you can .....
- (a) Delete it and download it again (b) Open it with another program (c) both a and b
- 56 ..... are instructions that are provided in code for writing computer programs.
- (a) programming languages (b) computer hardware (c) software applications
- 57 HTML is commonly used for creating .....
- (a) AI software (b) web pages (c) mobile app

## Question 02

## put ( ✓ ) or ( ✗ )

- 1 You should use AI tools to invade people's privacy, cheat, or cause harm. ✗
- 2 Digital voice assistants respond only to emails. ✗
- 3 Navigation apps use AI to guide you to your destination. ✓
- 4 Users of AI do not need to be ethical. ✗
- 5 Email Spam Filters can help harmful Emails reach your inbox. ✗
- 6 AI uses human traits like problem-solving and reasoning to perform tasks. ✓
- 7 Chatbots on websites provide responses through chat windows. ✓
- 8 User privacy and security are important when designing AI tools. ✓
- 9 AI designers must ignore ethical usage. ✗
- 10 AI tools should be inclusive to all users. ✓
- 11 When designing AI tool, data should not be based on fact. ✗
- 12 Language Processing Tools can be used to plagiarize work. ✓
- 13 AI tools are not used in writing essays. ✗
- 14 It's not necessary to protect yourself online when using AI tools. ✗
- 15 AI tools should be beneficial and used to help society. ✓



- 16 Websites that compare products can help consumers. ✓
- 17 Rumors and lies are negative online news stories affect companies. ✓
- 18 Comparisons websites are only based on the color of the product. ✗
- 19 Shares represent equal parts of a company's ownership. ✓
- 20 Search engines can only provide information about product prices. ✗
- 21 Companies may sell bonds to raise money. ✓
- 22 Reviews by family and friends are not useful in evaluating products ✗
- 23 Technological research tools, like search engines, provide link to relevant shopping sites. ✓
- 24 Online reviews are always accurate and trustworthy. ✗
- 25 A search engine provides quick and short product descriptions for consumers. ✓
- 26 Search engines do not provide links to relevant shopping sites. ✗
- 27 Stocks/shares do not involve any risk. ✗
- 28 Consumers use comparison websites to help them compare products. ✓
- 29 You can ask ESPs help with research. ✓
- 30 Chat windows have chatbots for responses. ✓
- 31 When writing to an ESP, it's not important to be formal. ✗
- 32 Sending an email request is a way to contact ESPs. ✓
- 33 Chatbots in chat windows are real people. ✗
- 34 Online museums can be considered as ESPs. ✓
- 35 The only way to contact ESPs is through email. ✗
- 36 When communicating with ESPs, it's necessary to be clear and focused. ✓
- 37 When writing an email, it is necessary to include greetings and closing messages. ✓
- 38 Contacting ESPs more formally involves using chat windows. ✗
- 39 Students cannot learn online from ESPs. ✗
- 40 You can create a database by using Google Meet. ✗
- 41 Microsoft Teams and Google Meet are video conferencing platforms. ✓
- 42 Participants can see you if you turn off your camera. ✗



- 43 You can join a meeting by entering the invite link. ✓
- 44 Video conference is not a means of real-time communication. ✗
- 45 You should mute your microphone when you're not speaking. ✓
- 46 No need to check connection and software before a video call. ✗
- 47 You can turn off the microphone or camera by clicking on the icon again. ✓
- 48 You can include a summary of the meeting in your follow-up email. ✓
- 49 Sending a follow-up email after a video conference is not necessary ✗
- 50 You can't include meeting recording link in your follow-up email. ✗
- 51 HTML is used to create static web content. ✓
- 52 JavaScript can't be used to create dynamic web content. ✗
- 53 Programming languages are used to write computer programs. ✓
- 54 Using the name of another file when trying to save a file can cause an error. ✓
- 55 Dynamic web content remains the same for every user. ✗
- 56 Corrupted files can be fixed by simply re-downloading them. ✓
- 57 If file name includes special characters, It may give error message. ✓
- 58 Using a password manager is not a reliable solution for managing passwords. ✗
- 59 Dust and water in the charging port can prevent a device from charging. ✓
- 60 You should regularly update your programs to prevent corrupted files. ✓

انتهت الأسئلة مع أطيب الامنيات بالنجاح والتوفيق

### Lesson

Theme 3 Lesson 2  
Theme 3 Lesson 3  
Theme 3 Lesson 4  
Theme 3 Lesson 5  
Theme 3 Lesson 6

### Choose the correct answer

From Q1 to Q15  
From Q16 to Q28  
From Q29 to Q39  
From Q40 to Q50  
From Q51 to Q60

### Put (T) or (F)

From Q1 to Q15  
From Q16 to Q28  
From Q29 to Q39  
From Q40 to Q50  
From Q51 to Q60



### Please note that:

Theme 3 – Lesson 1 is enrichment (اثرائي للاطلاع فقط)

By: Mrs Suzy Atef

