

2023

PONY

سلسلة كتب الاستاذ

SCIENCE



FINAL

REVISION

BY: AMIRA AHMED

6

PRIMARY
FIRST TERM

مذكرتي
Mozkrty.com

Q1

Choose the correct answer:

- 1 is considered the building unit of the bodies of living organisms.
 a. Nucleus b. Oxygen c. Cell membrane d. The cell
- 2 The allow water to pass to and from the cell.
 a. nucleus b. cell membrane c. cytoplasm d. chloroplast
- 3 Which of the following cells is the smallest in size?
 a. Plant cells b. Bacterial cells
 c. Unfertilized bird egg d. Animal cell
- 4 maintains the balance of water on both sides of the cell.
 a. The nucleus b. Ribosomes c. Cell membrane d. Cell wall
- 5 The cell controls of water balance by passing it through
 a. cell wall b. cell membrane c. nucleus d. Mitochondria
- 6 The cell takes the materials it needs and uses them to get
 a. waste b. energy c. matter d. food
- 7 contain(s) only one cell.
 a. Human body b. Plants
 c. Unfertilized bird egg d. Insect body
- 8 Cells need and to grow and live.
 a. carbon dioxide - food b. water - wastes
 c. oxygen - food d. sunlight - wastes
- 9 Which of the following is the smallest system in the human body?
 a. System b. Tissue c. Cell d. Organ
- 10 Bacteria are considered organisms.
 a. multicellular b. a cellular c. unicellular d. eukaryotic
- 11 The surrounds each cell, protects it and regulates what can enter it.
 a. cytoplasm b. plasma membrane
 c. cell wall d. nucleus

- 12 Animal bodies contain a variety of cells, such as
 a. muscle cells b. photosynthesis c. guard cells d. chloroplasts
- 13 A group of organs working together represents
 a. a system b. a tissue c. a cell d. an organelle
- 14 The is used to see cell components.
 a. telescope b. microscope
 c. lens d. medical glasses
- 15 Microorganisms are similar to plants in the
 a. number of cells b. presence of cells
 c. size of cells d. structure of cells
- 16 The organisms made up of only one cell, such as
 a. bacteria b. plants c. animals d. insects
- 17 The organisms made up of more than one cell, such as
 a. plants b. bacteria
 c. unfertilized bird egg d. b and c
- 18 is inside the membrane and supports the organelles.
 a. Plasma membrane b. Cytoplasm
 c. Nucleus d. Chloroplast
- 19 and are responsible for transporting different materials in cell.
 a. Plasma membrane and cytoplasm
 b. Nucleus and chloroplast
 c. Golgi apparatus and endoplasmic reticulum
 d. Cell wall and chloroplast
- 20 The surrounds plant cells to give them a definite shape.
 a. cell wall b. chloroplast
 c. mitochondrion d. plasma membrane
- 21 The bodies of animals are characterized by the presence of special structures that help them keep their shape, such as
 a. skin b. bones c. intestines d. exoskeleton

Final Revision

- 22 One of the components of a cell that similar to an electrical power station is
- a. nucleus b. cytoplasm c. chloroplasts a. mitochondria
- 23 One of the components of the cell prepares and packages materials within the cell and transports them out of the cell is
- a. vacuole b. Golgi apparatus
c. mitochondria d. cell wall
- 24 A component of the cell that is characterized by its ability to store nutrients, water, and waste is
- a. vacuole b. cytoplasm c. mitochondria d. chloroplast
- 25 contains the pigment chlorophyll, which helps it absorb the energy of sunlight to carry out the photosynthesis process.
- a. Nucleus b. Chloroplast c. Mitochondria d. Cytoplasm
- 26 is considered the main control center in the cell.
- a. Nucleus b. Chloroplast
c. Golgi apparatus d. Atom
- 27 A type of cell that contains a cell wall and chloroplast is
- a. An animal cell b. a plant cell c. bacteria d. a human cell
- 28 The plant cell is distinguished from the animal cell in that it contains which gives it a definite shape.
- a. cell membrane b. cell wall
c. vacuole d. chloroplast

Q2

Put (✓) or (X):

- 1 Humans' red blood cells contain a nucleus. ()
- 2 New cells come from existing cells. ()
- 3 All cells have a cell wall. ()
- 4 The number of cells is similar in plants and animals. ()
- 5 Each cell is surrounded by a plasma membrane that protects it and regulates what can enter. ()
- 6 Tissue is made up of a group of organs. ()

- 7 The cell nucleus is responsible for cell division. ()
- 8 The size of the vacuole differs between the plant cell and the animal cell. ()
- 9 The plant cell is distinguished from the animal cell by the presence of chloroplasts and a cell wall. ()
- 10 An animal cell is similar to a plant cell in shape and structure. ()
- 11 One of the functions of the endoplasmic reticulum is helping in assembling proteins. ()
- 12 Plant cells are similar to animal cells in the presence of a nucleus. ()
- 13 Plant cells have a cell wall and therefore do not need a cell membrane. ()
- 14 Animals can make their own food because of the presence of chloroplasts inside their cells. ()

Q3

Write the scientific term (Write what the following statement refers to):

- 1 It is a tool used to see the components of the cell. (.....)
- 2 It is the building unit of life on Earth. (.....)
- 3 It is the powerhouse of the cell. (.....)
- 4 It is a structure within the cell that has a special function. (.....)
- 5 It is the membrane that allows water to enter and leave the cell. (.....)
- 6 It is the organelle responsible for controlling cell activities, such as making cell proteins. (.....)
- 7 It is the gelatinous liquid inside the cells and supports the cell organelles. (.....)
- 8 It is the process of using oxygen to obtain chemical energy from food so that cells can continue their function. (.....)
- 9 They are living organisms with more than one cell. (.....)
- 10 It is a group of tissues joined together and involved in performing a particular function. (.....)

- 11 They are structures within the cell that have a special function. (.....)
- 12 When examining transparent, colorless cells under a microscope, we used stain. (.....)
- 13 They are organelles that help in assembling and transporting proteins to build and repair the cell. (.....)
- 14 Sac-like structures used for storage of nutrients, water, and waste; in plant cells. (.....)
- 15 It is the organelle that packages materials within the cells and transports them out of the cell. (.....)

Q4

Complete the following sentences:

- 1 Living organisms grow and reproduce by increasing the of their cells.
- 2 The cells of are smaller than plant and animal cells.
- 3 The was the first person to use the word cell.
- 4 Unfertilized bird egg contains cell
- 5 The cell wall of a plant cell is made of
- 6 The specialized types of plant cells perform the process.
- 7 The insects have a hard, shell-like covering called an
- 8 The green color in a plant cell is due to it containing pigment.

Q5

Give reasons for (State the scientific reason):

- 1 The cell membrane maintains the balance of water on both sides of the cell.
.....
- 2 The number of cells in the body of an adult is much greater than the number of cells in the body of the young child.
.....
- 3 A microscope is used to see cells.
.....

- 4 The cell needs energy in the form of food and oxygen.
.....
- 5 The mitochondria are the powerhouses of the cell.
.....
- 6 It is possible to distinguish between plant cells and animal cells by a microscope.
.....
- 7 The cell membrane has the property of being selectively permeable.
.....
- 8 The cell membrane plays a main role in maintaining the cell.
.....
.....
- 9 Plants can make their own food.
.....
.....
- 10 The plant cell has a definite shape, while the animal cell does not.
.....
- 11 Animals cannot make their own food.
.....

Q6

What happens if:

- 1 Too much water enters the cell?
.....
- 2 The microscope was not invented (discovered)?
.....
.....
- 3 There is no nucleus inside the cell?
.....
- 4 There is no cell membrane?
.....

Final Revision

5 There is no chloroplast in the plant cell?

.....

6 There is no vacuole in the plant cell?

.....

7 There are no mitochondria inside the cell?

.....

8 There is no cytoplasm inside the cell?

.....

9 There is no endoplasmic reticulum in the plant cell?

.....

Q7

Explain what is meant by cellular respiration.

سلسلة كتب الأستاذ

.....

.....

.....

Q8

Explain the difference between unicellular and multicellular organisms.

.....

.....

.....

.....

Q9

What does the picture in front of you indicate?

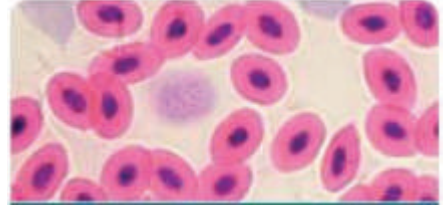
.....



Q10

What does the picture in front of you indicate?

.....



Q11

Explain what is meant by selectively permeable.

.....

.....

PONY

سلسلة كتب الاستاذ

الأستاذ

سلسلة كتب الاستاذ

Q1

Choose the correct answer:

- 1 Muscle cells need to be shaped like fibers.
 a. short b. long c. fatty d. soft
- 2 The coordinates the needed movements to muscles.
 a. blood b. lung c. brain d. heart
- 3 The system receives signals from the body's organs, such as the eye.
 a. nervous b. muscular c. respiratory d. digestive
- 4 The heart is one of the organs of the system.
 a. nervous b. circulatory c. digestive d. respiratory
- 5 When feeling nervous or exposed to a dangerous situation,
 a. each system works separately
 b. the systems work together in an integrated system
 c. the systems do not interact with each other
 d. the nervous system only work
- 6 The process of muscle contraction leads to its length.
 a. decrease b. increase
 c. no change in d. no correct answer
- 7 The sends instructions to muscles.
 a. heart b. brain c. arm d. lung
- 8 Performing simple movements such as picking up a glass of water over the table. What systems in the human body work together to perform this task?
 a. The nervous and circulatory systems
 b. The nervous and musculoskeletal systems
 c. The nervous, circulatory, and musculoskeletal systems
 d. The digestive and circulatory systems
- 9 The group of similar cells work together to form
 a. organ b. tissue c. system d. organelle

- 10 secretes enzymes to increase the chemical breakdown of food.
 a. Lungs b. Stomach c. Large intestine d. Kidney
- 11 The liver stores sugar and converts it into
 a. protein b. fat c. starch d. glycogen
- 12 The endocrine glands secrete to help the body perform its function.
 a. hormones b. salts c. proteins d. sugars

Q2 Put (✓) or (X):

- 1 The brain pumps more blood to muscles during danger. ()
- 2 The two arms move due to the contraction and relaxation of muscles. ()
- 3 Undigested food is stored in the small intestine until it is expelled. ()
- 4 Involuntary muscles move automatically; their movement can't be controlled. ()
- 5 When the diaphragm muscle contracts, the air is expelled out from the lungs. ()
- 6 The circulatory system transports only hormones to all body parts. ()
- 7 The heartbeat slows down when exposed to danger or stress. ()
- 8 When the arm is bent, the front muscle relaxes and the back muscle contracts. ()

Q3 Write the scientific term (Write what the following statement refers to):

- 1 It is the organ that pumps more blood to feed the muscles required for movement. (.....)
- 2 It is the organ that sends instructions to the muscle. (.....)
- 3 It is a system consisting of bones, muscles, ligaments, tendons, and cartilage. (.....)
- 4 They are cells are shaped like long fibers, which allows movement. (.....)
- 5 It is a system that is made up of bones, ligaments, tendons, and cartilage. (.....)

Final Revision

- 6 It is the cell which able to store and use energy quickly. (.....)
- 7 It is a fluid secreted in the mouth that helps digest food. (.....)
- 8 It is a system of organs and tissues that helps the body breathe. (.....)
- 9 It is a muscle that pumps oxygenated blood to every cell. (.....)
- 10 It is a muscular opening at the end of the rectum through which food waste is expelled. (.....)
- 11 It is the main organ of the respiratory system. (.....)
- 12 It is a system that converts complex nutrients into simple substances in the human body. (.....)

Q4

Complete the following sentences:

- 1 The pumps more blood to feed the muscles required for movement.
- 2 The sends instructions to the muscles.
- 3 To pick up a glass of water, the first sees the location of the book.
- 4 Hormones are transmitted to all parts of the body by the
- 5 During inhalation the diaphragm muscle
- 6 Glucose sugar is stored by the and in the form of animal starch.

Q5

Give reasons for (State the scientific reason):

- 1 The human body is considered a system.
.....
- 2 No system in the body can work alone to do a simple task.
.....
- 3 Muscle cells need to be shaped like long fibers.
.....

4 Cells must vary in shape and size.

.....

.....

5 The endocrine system plays an important role in the fight-or-flight response.

.....

.....

.....

.....

.....

6 Heart muscle relaxes and contracts.

.....

.....

7 Chewing and breaking down food facilitates the digestion process.

.....

.....

Q6

What happens if:

1 Muscle contracts and relaxes?

.....

.....

2 Diaphragm muscle contracts?

.....

.....

3 The heart muscle contracts and relaxes?

.....

.....

4 You face threat or danger according to your heart beats?

.....

.....

5 The front muscle in the upper arm contracts and the back muscle relaxes?

.....

.....

Q7 Write the function of each:

1 Small intestine

.....
.....
.....

2 The respiratory system

.....
.....

3 The endocrine system

.....

4 The gallbladder

.....

Q8 Identify four body systems that work together when playing a football game:

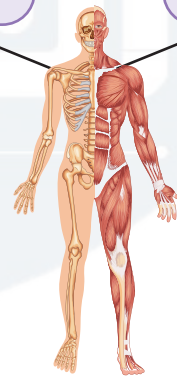
.....
.....

Q9 Determine the two systems in the picture in front of you:

.....
.....

a)

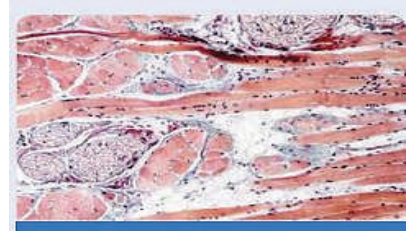
b)



Q10

Determine the name of tissue in the picture in front of you:

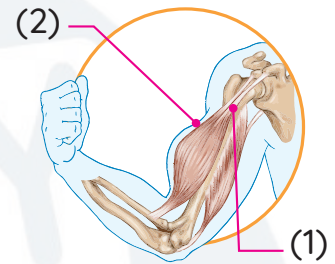
.....



Q11

Notice the picture, then complete:

- 1 Muscle number is a relaxed muscle.
- 2 Muscle number is a contracted muscle.

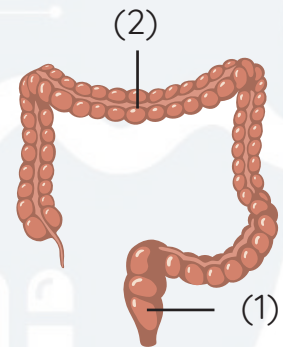


Q12

Notice the picture, then complete:

- 1 The number (1) indicates
- 2 The number (2) indicates large
- 3 Write function of number (2).

.....
.....



Q13

Notice the picture, then complete:

- 1 The heart is from the system.
- 2 What happens to the heart when the human body is faced with danger?

.....
.....



Q1

Choose the correct answer:

- 1 The electric circuit contains , which is responsible for opening and closing the electric circuit.
 - a. a battery
 - b. a switch
 - c. a lamp
 - d. a resistor
- 2 Scientists use a to detect the flow of an electric current.
 - a. generator
 - b. galvanometer
 - c. battery
 - d. switch
- 3 A turbine uses the power of wind or water to generate energy to operate electrical generators.
 - a. electrical
 - b. mechanical
 - c. solar
 - d. chemical
- 4 is used to slow the flow of an electric current in the electric circuit.
 - a. A battery
 - b. A switch
 - c. A resistor
 - d. A lamp
- 5 Electrical wires are coated with a layer of
 - a. iron
 - b. aluminum
 - c. plastic
 - d. nickel
- 6 All the following are electric insulators, except
 - a. wood
 - b. plastic
 - c. rubber
 - d. copper
- 7 is an example of electrical insulators.
 - a. Iron
 - b. Aluminum
 - c. Wood
 - d. Copper
- 8 Magnets can be made from
 - a. copper
 - b. glass
 - c. iron
 - d. plastic
- 9 The area around the magnet in which magnetic force appears is a
 - a. magnet
 - b. magnetic force
 - c. magnetism
 - d. magnetic field
- 10 A magnetic field can be formed when an electric current flows around a
 - a. plastic core
 - b. battery
 - c. metal core
 - d. rubber core
- 11 The factors on which gravitational force depends are
 - a. mass and shape
 - b. size and shape
 - c. mass and volume
 - d. distance and mass

- 12 The artificial pacemaker is inserted into the of the human body.
 a. legs b. chest c. neck d. brain
- 13 The artificial pacemaker helps patients who suffer from
 a. kidney failure b. diabetes
 c. headaches d. irregular heartbeats

Q2 Put (✓) or (X):

- 1 In series circuits, the electric current can flow in different branches. ()
- 2 The electric devices in houses are connected in series circuits. ()
- 3 When a light bulb connected in a series burns out, all the other light bulbs are turned off. ()
- 4 Electricity is considered a form of energy. ()
- 5 Water in dams is used to operate wind turbines. ()
- 6 The switch is the source of electricity in an electric circuit. ()
- 7 When placing an insulator in the electric circuit, electricity flows. ()
- 8 Electrical resistors are found in some devices, such as electric stoves. ()
- 9 Copper, aluminum, and rubber are electric conductors. ()
- 10 An electric shock happens when touching a non-insulated wire that an electric current flows through. ()
- 11 A metallic spoon is an electric conductor. ()
- 12 Electricity and magnetism are related to each other. ()
- 13 An electric current is generated when a static magnet is placed inside a coil. ()
- 14 A magnet attracts all materials. ()
- 15 The natural pacemaker inside our heart produces electrical currents to make it contract. ()

Q3 Correct the underlined words:

- 1 Gravity is the force by which a magnet attracts some materials.
 (.....)

- 2 Magnetism is a pulling or pushing force, while gravity is a pushing force only. (.....)
- 3 Non-metals allow electric current to flow through them. (.....)
- 4 Water in dams is used to operate wind turbines. (.....)
- 5 Electricity can flow through electric insulators. (.....)
- 6 Scientists use a generator to detect the flow of small electric currents. (.....)
- 7 Electric wires are made of plastic and conduct electricity. (.....)

Q4

Write the scientific term:

- 1 It is a tool that is used to open and close the electric circuit. (.....)
- 2 They are the components of an electric circuit that are used to limit the flow of electricity through the circuit. (.....)
- 3 It is a device for generating electricity by using magnets. (.....)
- 4 They are materials that are attracted to the magnet. (.....)
- 5 They are materials that are not attracted to the magnet. (.....)
- 6 It is the area around the magnet in which its magnetic force appears. (.....)
- 7 It is the pattern formed by iron filings near the magnet. (.....)
- 8 It is the flow of electric charges along a closed path. (.....)
- 9 It is the force of Earth which attracts all objects on its surface to its center. (.....)
- 10 They are materials that allow the electric charges to flow through. (.....)
- 11 They are two factors that affect the force of gravity. (.....)
- 12 It is a battery-operated device that is inserted into the chest to regulate heartbeat. (.....)
- 13 It is a type of electric circuits that are found in houses and help in operating many devices at the same time. (.....)

- 14 They are materials that don't allow electrons to flow through them easily. (.....)
- 15 They are materials that allow electrons to flow through them easily. (.....)
- 16 They are small electric charges moving in the wires in a closed electrical circuit. (.....)
- 17 It is a device inserted into the chest that stimulates the heart to beat regularly. (.....)

05

Complete the following sentences:

- 1 Electric circuits in houses are connected in a way.
- 2 An electric circuit contains a, which is responsible for opening and closing the circuit.
- 3 Electric wires are coated by as it is an electric insulator.
- 4 Rubber is an electric, while copper is an electric
- 5 Generators change energy into energy.
- 6 Wind turbines need the to produce electricity.
- 7 Electric energy transfers to the devices that are powered by electricity through
- 8 A moving magnet inside a coiled wire can generate an
- 9 By increasing the number of loops in the coil, and moving a magnet inside it, the amount of generated electric current will
- 10 A magnet can be made of and other materials.
- 11 Gold and copper are considered materials as they are not attracted to the magnet.

Q6 Cross out the odd word:

- 1 Iron – Nickel – Aluminum – Cobalt (.....)
- 2 Battery – Magnet – Wire – Light bulb (.....)

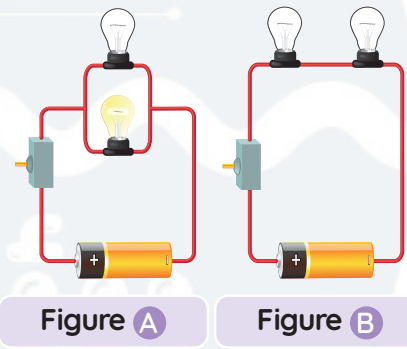
Q7 Classify the following materials in the table below:

(Wooden clip – Metallic paperclip – Plastic spoon – Piece of glass – Copper wire – Iron nail)

Magnetic Materials	Non-magnetic Materials
.....
.....

Q8 Answer the following questions

- 1 The figure that represents the way of connecting devices in houses is
- 2 Mention the components of the electric circuit.



- 3 Define electric conductors.

Q9 Give reasons for:

- 1 The electric circuit is considered a system.
.....
.....
- 2 Wood and copper are not attracted to the magnet.
.....
- 3 Cobalt and nickel are considered magnetic materials.
.....

- 4 Most electric wires are covered with rubber or plastic.
.....
.....
- 5 The electric circuit must contain a battery.
.....
.....
- 6 Electric generators have a great importance in our lives.
.....
.....
- 7 When a ball is thrown into the air, it will stop moving upward and then fall down.
.....
.....
- 8 Gravity and magnetism are different from the other forces.
.....
.....
- 9 The heart has a natural pacemaker.
.....
.....
- 10 Many devices, such as toasters, microwaves, and electric stoves, contain resistors.
.....
.....
- 11 Some electric circuits contain electric resistors.
.....
.....
- 12 In the parallel circuit, we can turn off or remove one light bulb while the other light bulbs remain lit.
.....
.....
.....
- 13 Some electric circuits contain electric resistors.
.....
.....

14 The human body is considered an electric conductor.

.....
.....

15 All metals are considered electric conductors.

.....

Q10 What happens if:

1 Large magnets spin at a high speed around coiled wires?

.....

2 The switch is turned on in the electric circuit?

.....
.....

3 The switch is turned off in the electric circuit?

.....
.....

4 An electric circuit doesn't contain a switch?

.....

5 The mass of an object increases?

.....

6 The distance between an object and the Earth's center increases?

.....

7 The distance between objects and the center of the Earth decreases?

.....

8 A magnet is approached close to some iron nails mixed with small pieces of paper?

.....
.....

9 A magnet is moved inside a coil of wire in a circuit containing a galvanometer?

.....
.....

10 Aluminum foil is used to wrap electric wires?

.....
.....

11 Electric circuits in houses are connected in series?

.....

12 When a piece of wood is replaced by a piece of aluminum in an electrical circuit?

.....

13 A person touches a non-insulated electric wire through which an electric current passes?

.....
.....

14 A patient has slow or irregular heartbeats?

.....
.....

الأستاذ

سلسلة كتب الأستاذ

- 7 They are joints between parts of a bridge that allow its expansion without being damaged. (.....)
- 8 It is the decrease in the size of a substance due to decreasing its temperature. (.....)

Q4 Complete the following sentences:

- 1 The boiling point of a substance is the temperature at which a substance changes from into
- 2 The state of matter that has a fixed volume and shape is the state.
- 3 The energy is related to the motion of particles of a matter.
- 4 Changing ice into water followed by changing water into steam shows two different processes, which are and
- 5 The boiling point of water is than the boiling point of mercury.
- 6 The temperature at which solid changes to liquid is the point.
- 7 The and points are physical properties of matter.
- 8 Temperature is a measure of the energy of the molecules of a substance.
- 9 When the thermal energy of a matter increases, the kinetic energy of its molecules and moves
- 10 The spaces between molecules during the melting of solids.
- 11 When a substance contracts, its volume, while its volume increases when it expands.
- 12 Heat flows from a object to a cool one.
- 13 Heat is one of the forms of
- 14 Examples of thermal conductors materials are and
- 15 Hot food continues to lose heat until its temperature becomes the temperature of the air surrounding it.
- 16 Examples of insulators materials are and

Q5 Cross out the odd word:

- 1 Melting – Freezing – Condensation – Conduction (.....)

- 2 Steam – Ice – Rocks – Glass (.....)
- 3 Water – Milk – Glass – Oil (.....)

Q6 Give reasons for:

- 1 Ice melts when it is put in a hot cooking pan.

.....

.....

- 2 Matter may change from one state to another.

.....

.....

- 3 All matter contains thermal energy.

.....

.....

- 4 Small spaces are left between the railroad tracks.

.....

.....

Q7 What happens if:

- 1 You touch a hot cup of tea (according to the transfer of heat)?

.....

.....

- 2 You touch a piece ice (according to the transfer of heat)?

.....

.....

- 3 You heat a piece of butter (according to the change of state)?

.....

.....

- 4 Expansion joints are not included in the design of bridges?

.....

.....

Concept 2.2

Heat Transfer

Evaluation Weeks 12, 13, & 14

Q1 Choose the correct answer:

- If you mix water at two different temperatures, the resulting temperature of the mixture will be
a. 60°C b. 20°C c. 10°C d. 38°C
- The measuring unit of heat is
a. $^{\circ}\text{C}$ b. meters c. grams d. calories
- Heat is transferred through solids by
a. radiation only b. conduction and convection
c. conduction only d. radiation and convection
- is the transfer of heat through liquids and gases.
a. Radiation b. Conduction c. Freezing d. Convection
- Heat is transferred through copper and iron by
a. radiation only b. conduction only
c. conduction and convection d. convection only
- The heat of the Sun reaches the Earth by
a. conduction b. convection c. radiation d. condensation
- When an object stops on the top of a ramp, it stores energy.
a. kinetic b. light c. potential d. sound
- When a car goes down on a ramp, its energy changes to energy.
a. kinetic – potential b. sound – potential
c. potential – kinetic d. light – potential
- Due to the friction between a moving object and a flat road, the moving object changes some energy into energy.
a. kinetic – thermal b. potential – thermal
c. thermal – kinetic d. kinetic – potential

Q2

Put (✓) or (X):

- 1 Cool objects do not contain any energy inside. ()
- 2 We feel the heat, but we cannot see it. ()
- 3 Heat cannot be lost, only transferred. ()
- 4 The transfer of heat due to the movement of a liquid or gas is called radiation. ()
- 5 Some materials, such as wood, resist the transfer of thermal energy. ()
- 6 Holding your hands in front of a fire to warm them is an example of radiation. ()
- 7 When a substance changes its state, the mass of the substance does not change. ()
- 8 When an object is placed at a high place, it has potential energy. ()
- 9 Studying the chemical structure of any material helps us know its properties. ()
- 10 Steel is made of rocks, sand, and water. ()
- 11 Flexible fabrics are used in making cloth. ()

Q3

Write the scientific term (Write what the following statements refer to):

- 1 It is the energy transferred from a hot object to a cold object. (.....)
- 2 They are materials that resist the transfer of heat energy. (.....)
- 3 They are materials that allow heat to flow through them. (.....)
- 4 It is a condition in which the object temperature is equal to the surrounding environment. (.....)
- 5 It is the transfer of heat due to the movement of a liquid or gas. (.....)
- 6 It is heat that travels through space. (.....)
- 7 It is the transfer of heat when objects are touching. (.....)
- 8 When a substance changes state, the mass of the substance does not change. (.....)

- 9 It is the energy that kinetic energy changes into when a moving object is affected by friction. (.....)
- 10 It is a form of energy stored in an object when it is placed on the top of a ramp. (.....)
- 11 It is a material made of a mixture of iron and other elements. (.....)
- 12 It is a material that consists of sand, limestone, and soda ash. (.....)
- 13 It is a mixture of rocks, sand, and water, which becomes hard after it dries. (.....)

Q4 Complete the following sentences:

- 1 Heat flows from a object to a cool one.
- 2 Heat is one of the forms of
- 3 Thermal conductors materials include and
- 4 Hot food continues to lose heat until its temperature becomes the temperature of the air surrounding it.
- 5 Examples of insulators materials are and
- 6 The handles of cooking ware are made of plastic because it is a
- 7 Heat flows from the object to the surrounding objects.
- 8 Molecules of matter are always in
- 9 When a substance is heated, the kinetic energy of its molecules
- 10 Temperature is a measurement of the of the molecules of matter.
- 11 Thermal energy transfers from one place to another by,, and
- 12 When and, this affects the rate at which heat is transferred.
- 13 Examples of insulators are,, and
- 14 Conduction occurs with objects that are
- 15 Metals, such as and, are good conductors.
- 16 A metal doorknob feels than the wooden door it is on.

- 17 When a substance changes in state, the mass of the substance
.....
- 18 Some materials prevent heat from being transferred, such as
- 19 Friction between a moving car and a road changes its
energy into energy.
- 20 Smart clothes can in the dark and keep themselves
- 21 Plastic is made by chemically changing some compounds of
- 22 Glass is a mixture of,, and sodium carbonate.
- 23 Concrete is used as the base of as it is very strong.
- 24 When a toy car is at the top of a slide, it stores energy.
- 25 When a toy car goes down on the slide, its potential energy changes
into energy.

05

Give reasons for:

- 1 Cookware is made of aluminum.
.....
.....
- 2 We do not feel the thermal energy in cold objects.
.....
.....
- 3 Meteorologists must understand convection and radiation.
.....
- 4 A metal doorknob feels cooler than the wooden door it is on.
.....
- 5 A metal doorknob feels cooler than the wooden door, even though they
are both the same temperature.
.....
.....

6 Scientists should study the structure of molecules of different materials.

.....
.....

7 Due to friction force, the tires of a moving car become hot.

.....
.....

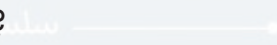
8 Smart clothes have many benefits.

.....
.....

Q6 What happens if:

1 A lizard stands on a hot rock?

.....
.....

2 The temperature of a body increases? 

.....
.....

3 You lift your face to the Sun?

.....
.....

4 The iron handle is made of metal?

.....
.....

5 We pick up a hot pot with a metal handle?

.....
.....

6 We weigh an ice cube then heat it (according to the mass of ice cube)?

.....
.....

7 Concrete is left to dry?

.....
.....

8 We make a chemical change to some compounds of petroleum?

.....
.....

9 We mix sand, limestone, and soda ash at a high temperature?

.....
.....

Q7

Explain how are the following materials created?

- 1 Steel:
- 2 Shrink-wrap:
- 3 Plastic:

Q8

Explain what is meant by:

- 1 Thermal equilibrium:
.....
.....
- 2 Thermal conductors:
.....
- 3 Convection:
.....
.....
- 4 Radiation:
.....
- 5 Law of Conservation of Mass:
.....
.....