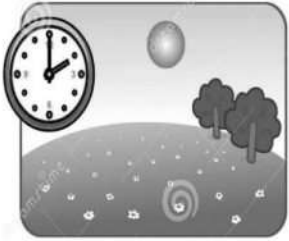


AL OLA Modern School

AL OLA Language School

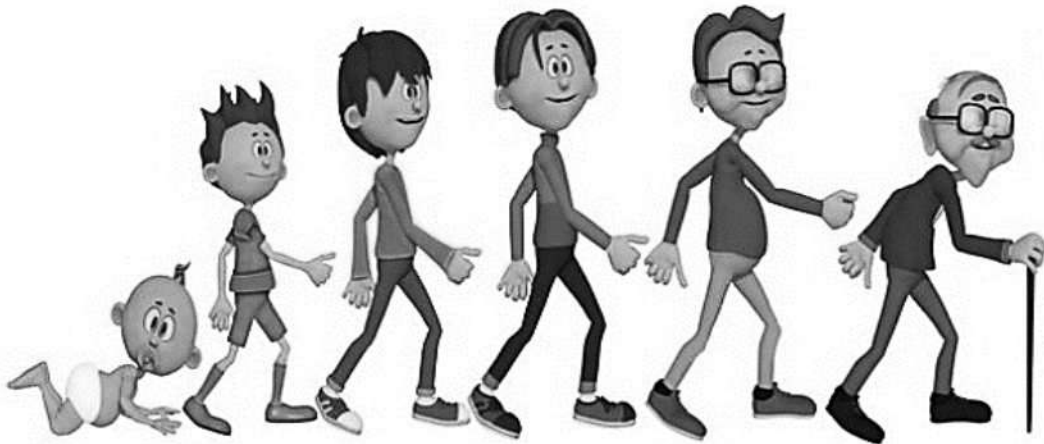


Discover (Science)

1st Primary

First Term

2021 /2022



Name :

Class :

أفضل جروب لتحميل الكتب والكورسات والملازم التعليمية



علمني
بعلمك



علمني بعلمك



علمني
بعلمك

01020629039

Group is manager by Mr.Ahmed Shabaan Elsheshtawy

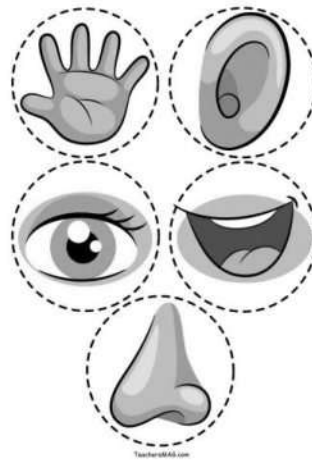
Summary of the lesson:

- Hello, My name is
- I am 6 years old.
- I am at first primary stage.
- I have my family: my Father, my Mother, my Sister & my Brother.



- In my extended family, I have my Father, my Mother, my Brother, my Sister, my two Grandfathers, my two Grandmothers, my Uncle & my Aunt.

- I have 2 eyes for sight.
- I have a nose to smell.
- I have 2 ears for hearing.
- I have 2 hands to touch.
- I have a tongue to taste.



- All living organisms (human, animals & plants) increase in size (grow)
- We change as we get older.



A) Choose the correct answer:

1 - I have to see.

a. one eye

b. two eyes

c. three eyes

2- I can touch things with my.....

a. ears

b. eyes

c. hands

3- I am at primary stage.

a. first

b. second

c. third

B) Complete the following sentences using the following words

(Me, my father, my mother & my brothers - grow -

Me, my father, my mother, my brothers, my grandfathers & grandmothers)

1. In my extended family, there are my

2. means to increase in size.

3. My family is

C) Put (✓) or (✗) :

1-My extended family is my father, mother, brother & sister. ()

2-Human, animals & plants grow in their life. ()

3- We change as we get older. ()

Summary of the lesson:

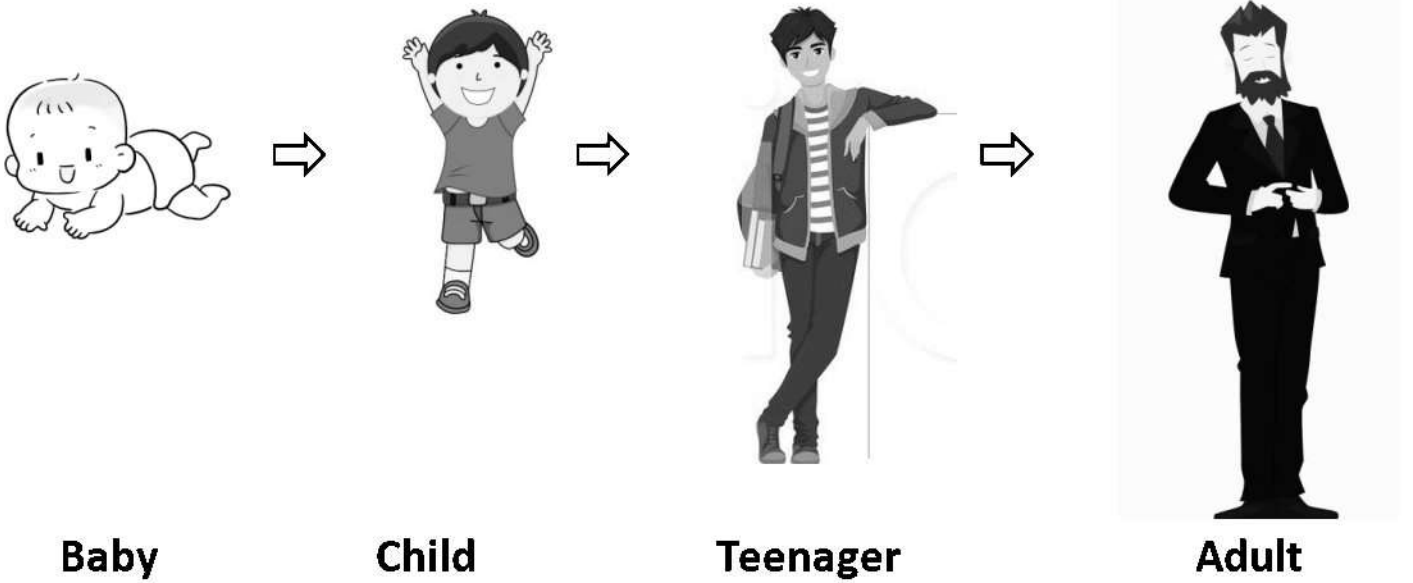
- **Baby:** Is the living organism when it is very small (offspring).

- **Adult:** Is the living organism after it grows (parents).

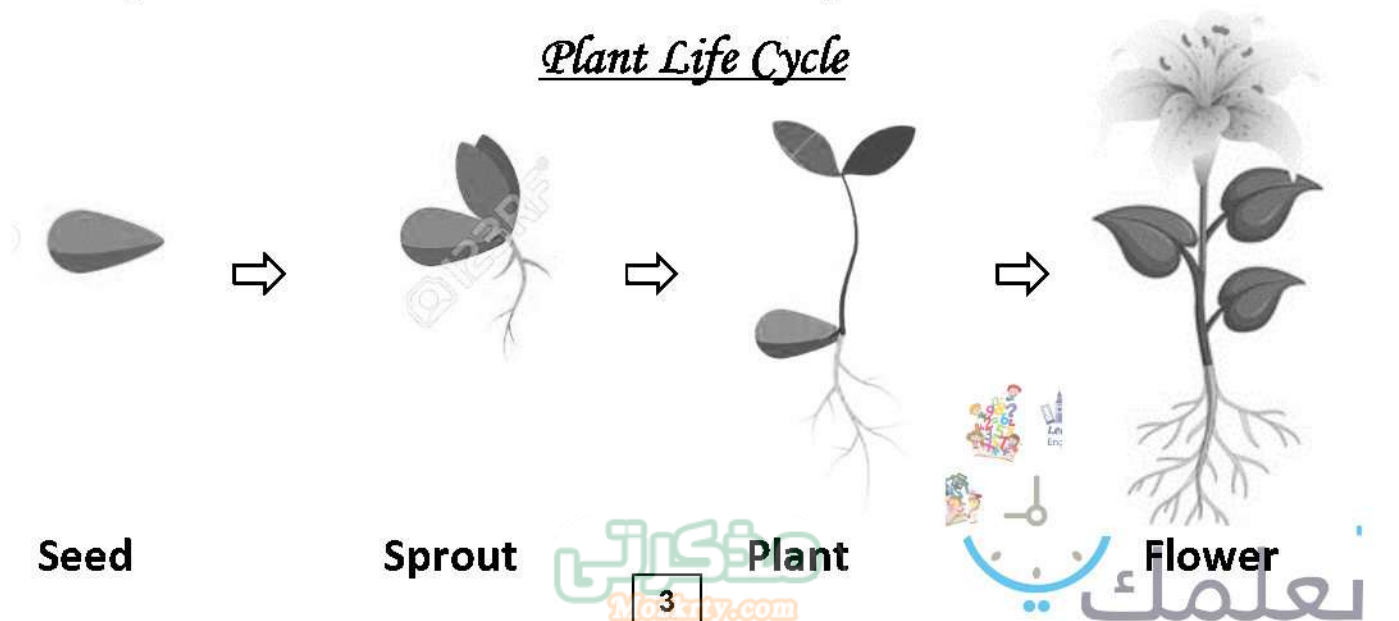


Human Life Cycle

The human starts his life as a **Baby** ⇒ **Child** ⇒ **Teenager** ⇒ **Adult**



Plant Life Cycle



A) Choose the correct answer.

1 - A human starts his life as

- a. an adult b. a teenager c. a baby

2- is the oldest stage in human.

- a. The baby b. The adult c. The teenager

3- is the first stage in a plant life.

- a. The sprout b. The seed c. The flower

B) Complete the following sentences using the following words

(the seed – a child – flowers)

1- Now, I become as I am at first primary stage.

2- To get a plant, you must put in the soil.

3- of a plant give us the fruits.

C) Put (✓) or (✗) :

1- The oldest plant stage is the seed. ()

2- The sprout comes after the seed and before the full plant. ()

3- The adult human goes to school. ()

Summary of the lesson:

A living organism needs 3 important things to live:



Shelter



Water



Food

- Shelter is a place to live inside to avoid rains, strong sunlight & storms
- The water is very important to all body processes.
- The food provides us with energy, helps us to grow and protects our body from many diseases due to vitamins it contains.

A) Choose the correct answer:

- 1 -helps us to grow
 - a. The shelter
 - b. The water
 - c. The food
- 2-is important for all body processes.
 - a. The shelter
 - b. The water
 - c. The food
- 3-protects us from heavy rains, strong sunlight & storms.
 - a. The shelter
 - b. The water
 - c. The food

B) Complete the following sentences using the following words

(The shelter – water – Vitamins)

- 1- is the place to live inside.
- 2-protect us from many diseases.
- 3- You must drink 2 liters ofevery day.

C) Put (✓) or (✗) :

- 1- The shelter is not important for human to live.
- 2- The food can protects us from many diseases.
- 3- Your body can grow without eating food.



Summary of the lesson:



The living organisms can:

Eat, Grow, Move, Respire, Excrete (release wastes) ,Sense & Reproduce (Have offspring)

- Plants, animals & humans are living organisms.

But, the non- living things don't eat, or grow, or move by themselves, or respire, or excrete or sense or reproduce.



- A chair, a ball, a wall, a car & a book all are non-living things.

- The animal can eat, grow, move, respire air, excrete, sense & reproduce.

- The plant can also eat, grow, respire air, excrete, & reproduce, but both movement and sensation are weaker than in animals.

- Living organisms need food, water, air to breath & shelter to live.

- They can grow and change, move by themselves & have babies.



- Non-living things don't eat or drink, they don't grow or change, they don't give small babies.



علمنا
بعلمك

A) Choose the correct answer.

1 - is a living organism.

a. a watch

b. a dog

c. a spoon

2-..... is a non-living thing.

a. a cat

b. a tree

c. a cup

3- can breathe, move and grow

a. the table

b. the fish

c. the dish

B) Put (✓) or (✗) :

1- A baby eat then grow to be a child.

()

2- The car is a living organism as it moves.

()

3- A tree is a non-living things as it doesn't move from its place.

()

C) Complete the following sentences using the following words

(Living organisms – cannot have babies – Motion & sensation)

1- are stronger in animals than in plants.

2- can move by themselves.

3- Non- living things

Summary of the lesson:



- The desert is a dry land that have less water and few plants.
- The water in desert is underground.
- Animals & plants that need less water live in desert.



Cactus



Camel

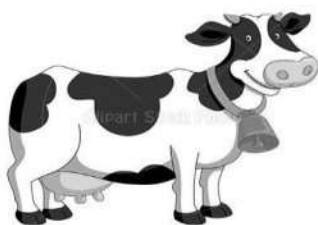


Fox

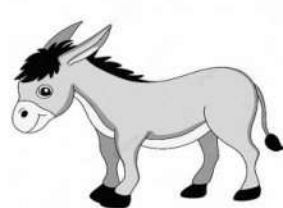


Goat

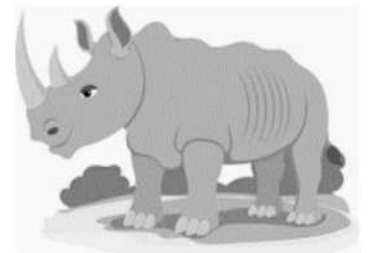
- The delta is a farming land
- Animals & plants that need a lot of water live in
- The source of water in the delta is the river.



Cow



Donkey



Rhinoceros

Summary of the lesson:- A plant consists of 4 main parts:1) The root:

- It holds the plant in the soil.
- It soaks water and gives it to the other plant parts.

2) The stem:

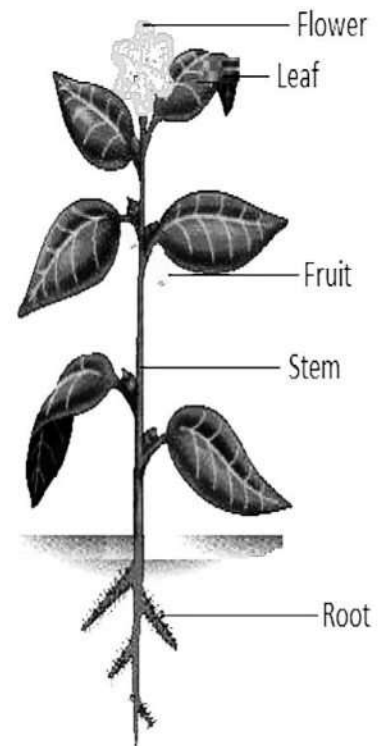
- It holds the plant up.
- It carries water from the root to other parts of the plant.

3) The leaves:

- They let the air in and out of the plant.
- They use sunlight to make the plant food.

4) The flower:

- They produce the fruits that contain seeds to give a new plant.

A) Choose the correct answer:

1 - The plant part that produces fruits & seeds is

- a. The root b. The stem c. The flower

2- soaks water from the soil and gives it to the other plant parts.

- a. The stem b. The root c. The leaves

3- holds the plant in the soil.

- a. The root b. The leaves c. The flower

B) Put (✓) or (✗) :

1- The root makes the food for the plant. ()

2- Leaves let the air inside & outside the plant. ()

3- The root holds a plant up.

C) Complete the following sentences using the following words

(produce fruits & seeds – The stem – sunlight)

1- Leaves use to make the plant food.

2- The flowers to give a new plant.

3- carries water from the root to other parts of the plant.

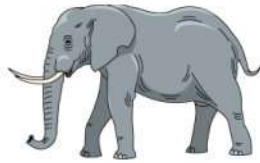
Summary of the lesson:

There are many different animals all over the world.

Activity : Match the animal to its name:



Penguin



Frog



Bear



Elephant



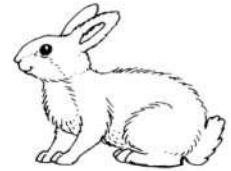
Owl



Rabbit



Cricket



Bat



Camel



Fish



Butterfly



Dolphin

Parts of the animal body:

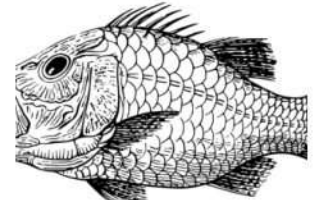
1- Some parts of an animal body are present For body protection



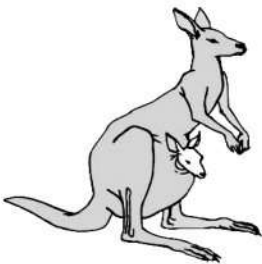
Shell (Turtles & Tortoises)



Feathers (Birds)



Scales (Fish)



Pouch (Kangaroo)



Antlers (Mountain Goats)



Claws (Predators)

2- Some parts of an animal body are present For Motion:



Wing (Birds)



Fin (Fish)

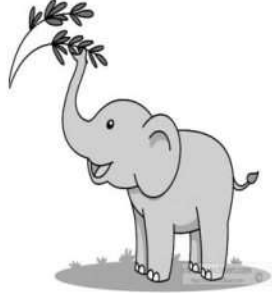
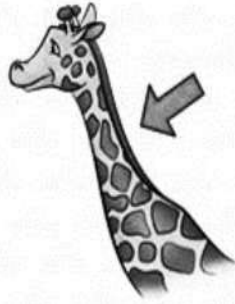


Tail (Dogs, Cats & Donkeys)



Hooves (Horses)

3- Some parts of an animal body are present For feeding (eating)



Beak (Birds) Long neck (Giraffes) Teeth (Lions & Sharks) Trunk (Elephants)

A) Choose the correct answer.

1 - From the animals that are protected by shells are

- a. The Fishes b. Turtles & Tortoises c. The birds

2- An elephant uses its to eat.

- a. trunk b. fins c. pouch

3- The of a bird help it to move by flying.

- a. hooves b. scales c. wings

B) Put (✓) or (✗) :

1- A Kangaroo protects its young inside a pouch on its abdomen. ()

2- An elephant body is covered by scales for protection. ()

3- The claws help the predatory animals to move.

C) Complete the following sentences using the following words

(long neck – fins - hooves)

1- Horses & donkeys use to move.

2- A giraffe uses its to eat the leaves of high trees.

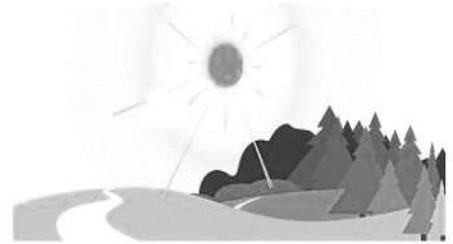
3- The fish needs to swim in water.

Summary of the lesson:

There are 4 main times during the movement of the sun in the sky:



morning



noon

a) Sunrise (Morning)

At the beginning of the day when the sunlight starts to appear in the sky



evening



night

b) Noon (Mid - day)

At the middle of the day when the sun is at the middle of the sky.

c) Sunset

When the sun is at the end of the sky and starts to leave.

d) Evening (Night)

When the sunlight disappears completely and the sky gets dark.

Human activities differs according to the sun movement:

- Students get up at sun rise and prepare themselves for their schools.
- They go home at noon to take their lunch, then get a short rest.
- They start their homework at the evening.
- They finish at night, take their dinner, washed up, and then go to sleep.

There're four seasons in each year



Winter

From December to February

Weather is rainy & cold

Spring

From March to May

Weather is cool & flowers appear

Summer

From June to August

Weather is hot & we go to beach

Fall

From September to November

Weather is cool & tree leaves fall to ground

Vegetables & fruits are different from one season to the other

- Some plants grow in winter as they need cold weather.
- Some plants grow in summer as they need hot weather.

A) Choose the correct answer:

- 1 - The sun starts to appear in the sky at
a. noon b. sunset c. sunrise
- 2 - We go to sleep at
a. noon b. evening c. sunrise
- 3- Flowers grow and appear on trees at.....
a. the summer b. The winter c. The spring

B) Complete the following sentences using the following words

(noon – sunrise - winter)

- 1- In, the weather is cold & rainy
- 2-The sun is at the middle of the sky at.....
- 3- We get up at

C) Put (✓) or (✗) :

- 1- Vegetables & fruits are different from one season to the other. ()
- 2- Flowers grow and appear at fall. ()
- 3-We go beach when weather is hot at winter. ()

B) Complete the following sentences using the following words

(weeds – medicines – sunlight)

- 1- The plant use to make its food.
- 2- are dangerous for plant.
- 3- Plants are used in making

C) Put (✓) or (✗) :

- 1- Weeds help the plant growth. ()
- 2- Wood of trees is used in building houses. ()
- 3- Air is important for the plant to respire & to make its food. ()

للحصول علي كافة

الملازم التعليمية تابعوني



Mr.Ahmed Shabaan Elsheshtawy

Work sheet 1

1- What is your name ?

.....

2- What is the meaning of extended family?

.....

Choose :

1-My Extended family is a

(big family –small family)

Complete :

1-the number of my family is

Draw your family :

Sheet 2

How many senses do you have ?

.....

What is the five senses ?

1-.....

2-.....

3-.....

4-.....

5-.....

Put (√) Or (×)

1-We have four senses ()

2-We can see with our eyes ()

3-We can hear with our hands ()

4-We can taste with our tongue ()

Choose

1-we have senses (five – four)

2-we can see with our (eyes – nose)

3-we can hear with our (eyes – ears)

4-we can smell with our (nose – tongue)

5-we can taste with our (nose – tongue)

6- we can touch with our (tongue – hands)

match

1-we can see with our

hands

2-we can hear with our

tongue

3-we can smell with our

nose

4-we can taste with our

ears

5-we can touch with our

eyes

complete

(taste – smell – hear – touch – see)

1- I can with my hands

2- I canwith my tongue .

3- I canwith my ears .

4- I canwith my nose .

5- I canwith my eyes .

Sheet 3

Speak about your friend?

.....
.....
.....

Choose :

1-HOW to respect your family ?

(I don't help my mother – I listen to my father)

Put (√) Or (×)

- | | |
|-----------------------------------|-----|
| 1- I don't help my mother | () |
| 2- I play with my brother | () |
| 3- I don't love my friend | () |
| 4- Me and my friend are different | () |
| 5- I have six senses | () |
| 6- We can see with our eyes | () |
| 7- We can hear with our hands | () |

What is the meaning of extended family?

.....

SHEET 4

Speak about NEFERTITI_?

.....
.....
.....

Choose

1-NEFERTITI was

(a teacher –a queen –a doctor)

2-NEFERTITI was

(beautiful – ugly)

3- NEFERTITI has got Daughters

(eight – six)

Put (√) Or (×)

- | | |
|--------------------------------|-----|
| 1- NEFERTITI has three sons | () |
| 2- NEFERTITI was a queen | () |
| 3- NEFERTITI was ugly | () |
| 4- NEFERTITI had six daughters | () |
| 5- NEFERTITI had two sons | () |
| 6- NEFERTITI had two sons | () |

complete

(taste – smell – hear – touch – see)

6- I can with my hands

7- I canwith my tongue .

8- I canwith my ears .

9- I canwith my nose .

10- I canwith my eyes .

Choose

- 1- Magdi Yacoub is a
(singer – doctor – actor)
- 2- Magdi Yacoub built a big
(hospital –factory -house)
- 3- Magdi Yacoub help People (rich – poor)

Put (√) Or (×)

- 1- Magdi Yacoub is a farmer ()
- 2- Magdi Yacoub is a doctor ()
- 3- Magdi Yacoub is treat poor people without any money ()
- 4- Magdi Yacoub built big hospital in luxor ()
- 5- Magdi Yacoub is a good person ()
- 6- Magdi Yacoub is a clever doctor ()

Choose

- 1-NEFERTITI was
(a teacher –a queen –a doctor)
- 2-NEFERTITI was
(beautiful – ugly)
- 4- NEFERTITI has got Daughters
(eight – six)

match

- | | |
|-------------------------|--------|
| 1-we can see with our | hands |
| 2-we can hear with our | tongue |
| 3-we can smell with our | nose |
| 4-we can taste with our | ears |

Introduce your self ?

.....
.....
.....
.....

Choose :

- 1- A child grows in to
(a teenager – adult – elder)
- 2- A teenager grows in to
(a teenager – adult – elder)

Put (√) or (×)

- 1- A child grows in to adult ()
- 2- A child grows in to teenager ()
- 3- we change as we grow ()

complete

(taste – smell – hear – touch – see)

- 1-I can with my hands
- 2-I canwith my tongue .
- 3-I canwith my ears .
- 4-I canwith my nose .
- 5-I canwith my eyes .

Put (√) Or (×)

- 1- Magdi Yacoub is a farmer ()
- 2- Magdi Yacoub is a doctor ()

Work sheet7

Complete

- 1- the seed grows in to
- 2- the sprout grows in to
- 3- the parent of plant is
- 4- the offspring of plant is
- 5- the baby grows in to
- 6- the child grows in to
- 7- the parent of human is
- 8- The offspring of human is

match

- | | |
|-------------------------|--------|
| 1-we can see with our | hands |
| 2-we can hear with our | tongue |
| 3-we can smell with our | nose |
| 4-we can taste with our | ears |

Put (√) Or (×)

- 1-I don't help my mother ()
- 2-I play with my brother ()
- 3-I don't love my friend ()
- 4-Me and my friend are different ()
- 5-I have six senses ()
- 6-We can see with our eyes ()
- 7-We can hear with our hands ()

Worksheet 8

Put ✓ or ✗

- 1- I get up early ()
- 2- I don't go to school ()
- 3- I meet my grandmother in school ()
- 4- I go to bed at night ()

Complete

(home – listen –homework –early –go)

- 1- I get up
- 2- Ito school
- 3- Ito teacher
- 4- I do my
- 5- I go back

Choose

I meet my in school

(grandmother – friends)

Choose

1-NEFERTITI was

(a teacher –a queen –a doctor)

2-NEFERTITI was

(beautiful – ugly)

3-NEFERTITI has got Daughters

(eight – six)

Introduce your self ?

.....
.....
.....
.....

match

- | | |
|-------------------------|--------|
| 1-we can see with our | hands |
| 2-we can hear with our | tongue |
| 3-we can smell with our | nose |
| 4-we can taste with our | ears |

Complete

- 1- I can see with my
- 2- I can hear with my
- 3- I can smell with my
- 4- I can taste with my
- 5- I can touch with my

Choose

1-Magdi Yacoub is a

(singer – doctor – actor)

2-Magdi Yacoub built a big

(hospital –factory -house)

3-Magdi Yacoub help People (rich – poor)

4-we have senses (five – four)

5-we can see with our (eyes – nose)

6-we can hear with our (eyes – ears)

7-we can smell with our (nose – tongue)

8-we can taste with our (nose – tongue)

9- we can touch with our (tongue – hands)

للحصول علي كافة

الملازم التعليمية تابعوني



Mr.Ahmed Shabaan Elsheshtawy