

Biology

First Sec.



Guidance models

امتحان استرشادي اولي ثانوي- فصل دراسي ثان
مادة الاحياء باللغة الانجليزية

Answer the following questions

A - Choose the correct answer:

1-If the number of chromosomes in a human kidney cell is 23 pairs, so the number of autosomes in the ovum is

- a) 23 pairs b) 22 pairs c) 23 d) 22

2- In human, which of the following is considered the 8th chromosome in term of size?

- a) Chromosome 7 b) Chromosome 8
c) Chromosome Y d) Chromosome X

3- The percentage of gametes with genotype (hs) that are produced by plant with genotype (hhSs) is

- a) 25% b)50% c)75% d)100%

4- The genotype leads to the appearance of pink color in the flowers of sweat pea plant is

- a) aaBB b) Aabb c) AaBb d) aabb

5-A child has the blood group (O) ,so it is impossible for his mother to have blood group

- a) (A) b) (B) c) (AB) d) (O)

6-The genotype for the blood group of a person who is considered a general donner for all the blood groups is

- a) AB Rh⁻ Rh⁻ b) AB Rh⁺ Rh⁻ c) OO Rh⁺ Rh⁻ d) OO Rh⁻ Rh⁻

7-When planting some corn seeds all the seedlings were white colored. From the following table which is Not considered a reason for this case?

	The seeds genotype	The environmental conditions
1-	Cc	Dark
2-	cc	Light presence
3-	cc	Dark
4-	Cc	Light presence

- a)1 b)2 c)3 d)4

8- A female with Down's syndrome is similar to a female with Turner syndromes in the

- a) The number of autosomes b) The number of sex chromosomes
c) Symptoms of cases d) Absence of chromosome Y

9- When a healthy woman married a hemophilic infected man, What is the possibility of emergence of males suffer from this disease?

- a) zero% b) 25% c) 75% d) 100 %

10- If the species name of Bolti fish is nilotica ,What is the scientific name for this fish ?

- a) *Tilapia Nilotica* b) nilotica tilapia
c) nilotica Tilapia d) Tilapia nilotica

11-A scientist makes the following notes on an organism:-

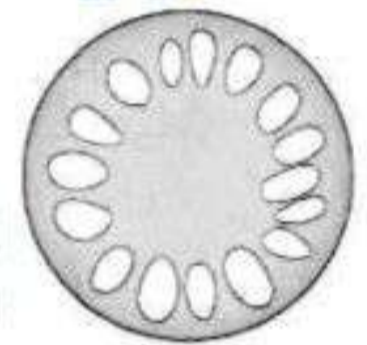
- 1-Has a body covered with horny scales
- 2-Uses the environment to regulate the body temperature
- 3-Breathes through lungs

Which classes of vertebrates does this organism most likely belong to?

- a) Aves b) Reptilia c) Amphibia d) Mammalia

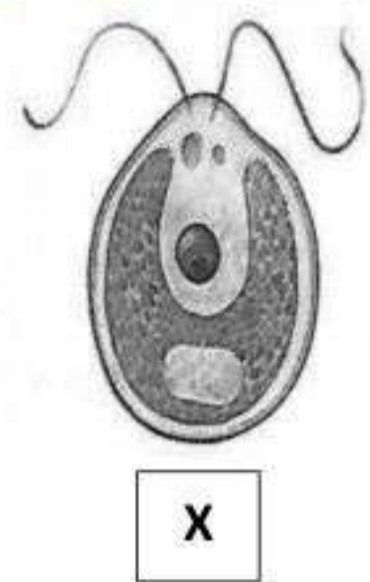
12-On examining the stem of the plant illustrated in the opposite figure, we can deduce that this plant is

- a) non vascular b) non flowering
c) containing seeds d) containing cones



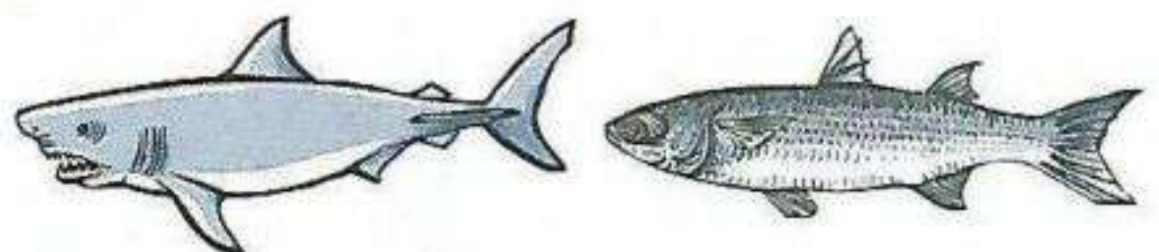
13-Living organism (X) is different from (Y) in

-
a) Moving by flagella
b) The phylum that it belongs to
c) Eukaryotic organism
d) The type of pigments



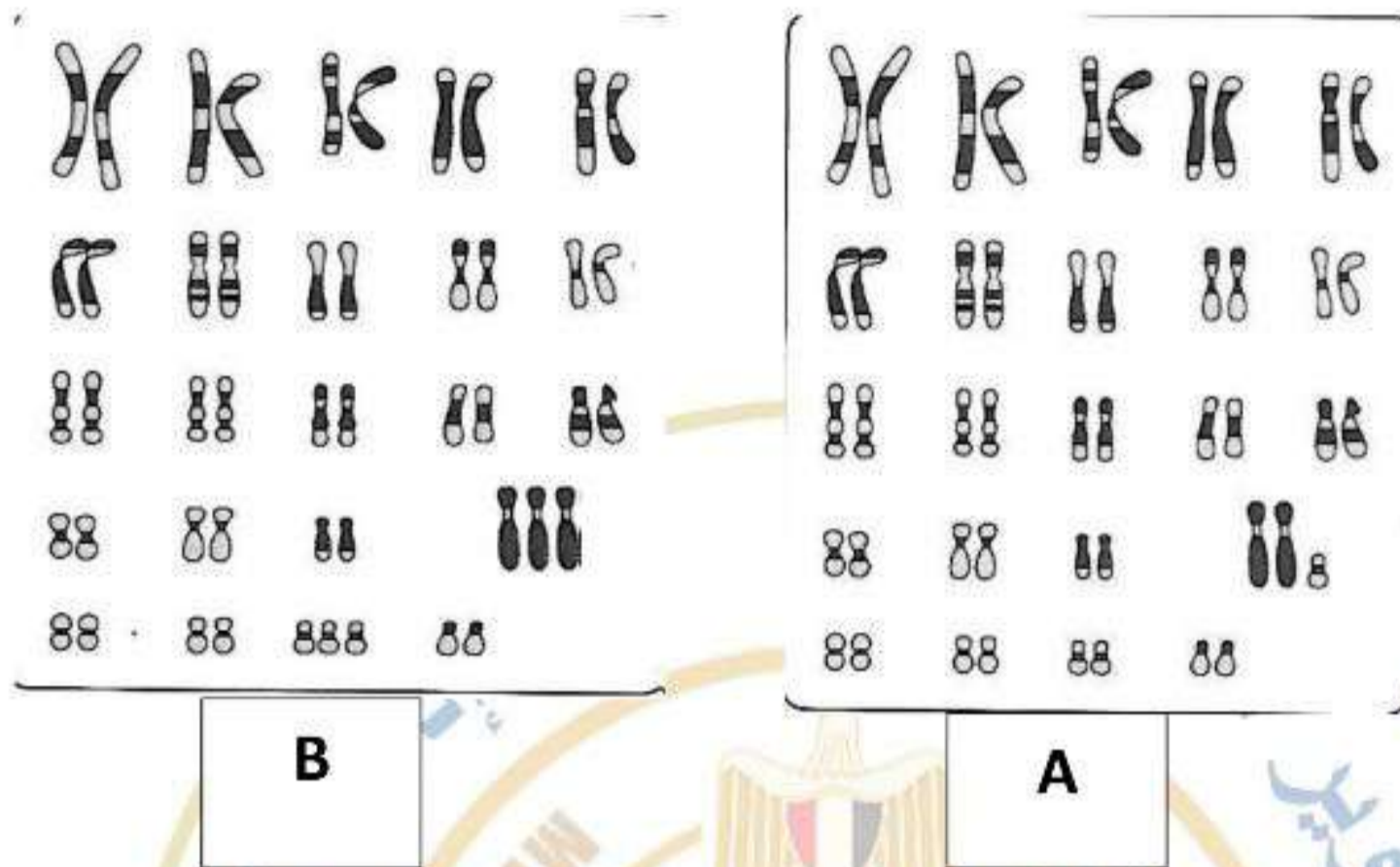
14) The opposite two figures are different in

- a) The type of endoskeleton
b) The presence of gills
c) The presence of paired fins
d) The type of blood



Essay Questions

A) Look at the following figures then answer :-



1- How many types of gametes can be produced from the person with the karyotype (A)?

2- The Karyotype (B) represents case

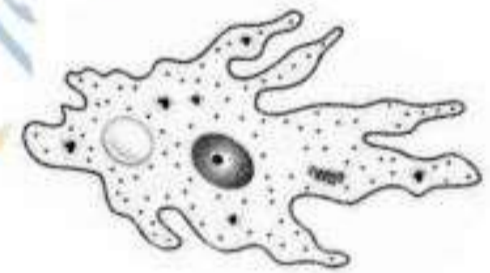
b) In the opposite figures answer the following:-

1- The locomotory organ of this organism is

.....

2- These organisms can be classified by

.....



انتهت الأسئلة

مادة الاحياء باللغة الانجليزية

Model answer

16 marks

A - choose the correct answer : 14 marks 14 x1

- 1- d)22
- 2- d) Chromosome X
- 3- b)50%
- 4- c) AaBb
- 5- c) (AB)
- 6- d)OO Rh⁻ Rh⁻
- 7- d) 4
- 8- d) Absence of chromosome Y
- 9- a)zero %
- 10- d)Tilapia nilotica
- 11- b) Reptilia
- 12-c) containing seeds
- 13-b) The phylum they both belong to
- 14) a) The type of endoskeleton

Essay questions 2 marks

A- One mark

- 1- Zero half mark
- 2- XXX or polyploidy or 44 + XXX half mark

b- One mark

- 1- Half mark pseudopodia
- 2- Half mark by the structure and method of reproduction (one point is enough)