

Science

نماذج اختبارات الأضواء

لشهر أكتوبر



المف
4
الابتدائي

2026

1 A) Complete the following sentence:

- The and bear can hide among trees in forests.

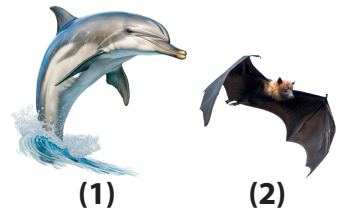
B) Answer the following questions:

- 1 Compare between structural and behavioral adaptation, in terms of their definition.

-
-

- 2 Look at the Opposite figure, then answer:

- a) The animal in Figure 1 relies on the property of to hunt its prey.
- b) Both animals rely on the sense of for communication.



- 3 The bull sharks have less competition for finding food in fresh water. Explain why?

-

2 A) Put (✓) or (X):

- The feet of the penguin do not freeze because they have a layer of fat. ()

B) Mention the importance or function of each of the following:

- 1 Esophagus

-

- 2 Spinal cord

-

3 A) Choose the correct answer:

- gather information from the environment.
a) Nerves b) Brain c) Sensory organs d) Body parts

B) Give a reason for each of the following:

- 1 The presence of hair on the Egyptian jerboa's feet and toes.

-

- 2 The inhaled air differs from the exhaled air.

-

1 A) Choose the correct answer:

- The bodies of all the following are covered with fur, except
a) fennec foxes b) penguins c) polar bears d) brown bears

B) Give a reason for each of the following:

- 1 The Egyptian mongooses make sounds.
.....
- 2 The starred agama lizard always looks for shade areas in desert.
.....
- 3 Fennec fox has a tan-colored coat.
.....

2 A) Write the scientific term:

- An aquatic animal that can hide from its enemies through countershading.
(.....)

B) What happens if ...?

- 1 Bats lose their ability to hear.
.....
- 2 Panther chameleon is exposed to danger.
.....

3 A) Complete the following sentence:

- When snakes make a noise, the sensory receptors found in jerboa's ears send a warning message to the brain.

B) Define:

- 1 Echo
.....
- 2 Camouflage
.....

1 A) Cross out the odd word:

- Taproot roots – Long trunk – Tiny leaves – Produce poison

B) What is meant by ...?

1 System

.....

2 Nocturnal animals

.....

3 Reflexes

.....

2 A) Correct the underlined word in the following sentence:

- The spinal cord runs through the mouth. (.....)

B) Answer the following questions:

1 The opposite animal depends on the sense of
to communicate with each other.



2 **Classify** the following into structural adaptation
or behavioral adaptation:

a) Living of the arctic fox in burrows. (.....)

b) V-shaped of feet of panther chameleon. (.....)

3 A) Complete the following sentence:

- has a triangular shape and short branches.

B) Explain:

1 The importance of juices of liver and pancreas.

.....

2 The Egyptian jerboa can jump for long distances.

.....

1 A) Write the scientific term:

- An animal that can turn its head backwards, and has a bowl-shaped face.

(.....)

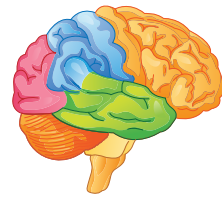
B) Answer the following questions:

- 1 Compare between Acacia and kapok tree, in terms of the types of roots.

-
-

- 2 Look at the following figure, then answer:

a) The following organ belongs to system.



b) Write its function.

-

2 A) Put (✓) or (X):

- Scout ants are responsible for alarming colony in danger.

()

B) What happens if ...?

- 1 Small intestine doesn't make its function in the human body.

-

- 2 Jerboa hears a snake moves towards it.

-

3 A) Choose the correct answer:

- Digestion process begins in the with the help of saliva.

a) stomach b) mouth c) esophagus d) teeth

B) Give a reason for each of the following:

- 1 The songs of humpback whales have high-pitched sounds during winter months.

-

- 2 Diaphragm plays an important role in respiration process.

-

-

1 A) Choose the correct answer:

- Mangrove tree has long and strong roots that
 - a) resist the strong wind
 - b) resist the water waves
 - c) prevent the loss of water
 - d) absorb the underground water

B) Give a reason for each of the following:

- 1 Acacia tree has sharp spines around its leaves.
•
- 2 The nurse ants send smelly messages to scout ants.
•
- 3 Gills are very important organs for fish.
•

2 A) Complete the following sentence:

- When the Egyptian jerboa is in danger, it starts to run away, this action occurs in a very short time called the

B) Mention the importance or function of each of the following:

- 1 Nerves
•
- 2 Large intestine
•

3 A) Put (✓) or (X):

- The blood vessels in a penguin's feet bring cold blood up. ()

B) What happens if ...?

- 1 The polar bear has thin fur instead of its thick fur.
•
- 2 Your hand touches the spines of a barbary fig plant.
•

Science

إجابات نماذج اختبارات الأضواء

لشهر أكتوبر



المف
4
الابتدائي

2026

1 A) Complete the following sentence:

- The **brown** and **black** bear can hide among trees in forests.

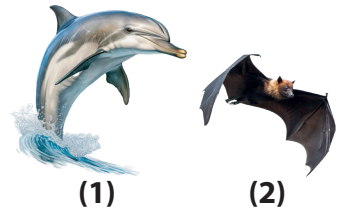
B) Answer the following questions:

- 1 Compare between structural and behavioral adaptation, in terms of their definition.

Structural adaptation	Behavioral adaptation
It is a change that happens in the structure of the organism's body.	It is a change that happens in the behavior of an organism.

- 2 Look at the opposite figure, then answer:

- a) The animal in Figure 1 relies on the property of **echolocation** to hunt its prey.
b) Both animals rely on the sense of **hearing** for communication.



- 3 The bull sharks have less competition for finding food in fresh water. **Explain why?**
• Because most sharks can only live in salt water.

2 A) Put (✓) or (X):

- The feet of the penguin do not freeze because they have a layer of fat. (X)

B) Mention the importance or function of each of the following:

- 1 Esophagus
• It allows the food to move from throat down into the stomach.
- 2 Spinal cord
• It carries messages from the brain to the body parts and vice versa.

3 A) Choose the correct answer:

- gather information from the environment.
a) Nerves b) Brain c) Sensory organs d) Body parts

B) Give a reason for each of the following:

- 1 The presence of hair on the Egyptian jerboa's feet and toes.
• To help it grip the sand when it jumps.
- 2 The inhaled air differs from the exhaled air.
• Because the inhaled air is rich in oxygen gas, while the exhaled air is rich in carbon dioxide gas.

1 A) Choose the correct answer:

- The bodies of all the following are covered with fur, except
a) fennec foxes b) penguins c) polar bears d) brown bears

B) Give a reason for each of the following:

- 1 The Egyptian mongooses make sounds.
 - To communicate with other mongooses to move from one place to another or when searching for food.
- 2 The starred agama lizard always looks for shade areas in desert.
 - To keep its body cool during hot sunny days.
- 3 Fennec fox has a tan-colored coat.
 - To hide in a sandy, rocky environment and to protect it from the hot Sun.

2 A) Write the scientific term:

- An aquatic animal that can hide from its enemies through countershading. (Bull shark)

B) What happens if ...?

- 1 Bats lose their ability to hear.
 - They can't hunt at night.
- 2 Panther chameleon is exposed to danger.
 - It puffs up its body with air, opens its mouth wide, and changes the color of its scales.

3 A) Complete the following sentence:

- When snakes make a noise, the sensory receptors found in jerboa's ears send a warning message to the brain.

B) Define:

- 1 Echo
 - It is the bouncing back of sound waves when they hit a solid surface.
- 2 Camouflage
 - It is a way of adaptation that some animals use to hide from their predators or preys by blending in with the surrounding environment.

1 A) Cross out the odd word:

- Taproot roots – Long trunk – Tiny leaves – Produce poison

B) What is meant by ...?

1 System

- It is a group of organs that work together to perform a specific job.

2 Nocturnal animals

- They are animals that adapted to be active at night.

3 Reflexes

- They are messages sent by the nervous system and are often so fast that you can't realize them.

2 A) Correct the underlined word in the following sentence:

- The spinal cord runs through the mouth. (backbone)

B) Answer the following questions:

- 1 The opposite animal depends on the sense of smell to communicate with each other.



- 2 **Classify** the following into structural adaptation or behavioral adaptation:

a) Living of the arctic fox in burrows.

(Behavioral adaptation)

b) V-shaped of feet of panther chameleon.

(Structural adaptation)

3 A) Complete the following sentence:

- The pine tree has a triangular shape and short branches.

B) Explain:

- 1 The importance of juices of liver and pancreas.

- They help in breaking down food into nutrients.

- 2 The Egyptian jerboa can jump for long distances.

- Because it has long hind legs.

1 A) Write the scientific term:

- An animal that can turn its head backwards, and has a bowl-shaped face. (Owl)

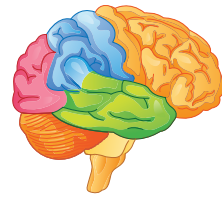
B) Answer the following questions:

- 1 Compare between Acacia and kapok tree, in terms of the types of roots.

Acacia tree	Kapok tree
A very long root called taproot that grows directly downward.	A large, wide root called buttress root.

- 2 Look at the following figure, then answer:

- a) The following organ belongs to nervous system.
b) Write its function.



- The main control center in the body.

2 A) Put (✓) or (X):

- Scout ants are responsible for alarming colony in danger. (X)

B) What happens if ...?

- 1 Small intestine doesn't make its function in the human body.
• The body can't absorb nutrients or digested food.
- 2 Jerboa hears a snake moves towards it.
• It hops in zigzag patterns, so it can escape quickly from danger.

3 A) Choose the correct answer:

- Digestion process begins in the with the help of saliva.
a) stomach b) mouth c) esophagus d) teeth

B) Give a reason for each of the following:

- 1 The songs of humpback whales have high-pitched sounds during winter months.
• Because the high-pitched sounds travel better through cold water.
- 2 Diaphragm plays an important role in respiration process.
• Because it contracts and moves downward during inhalation to increase the size of chest, while it relaxes and moves upward during exhalation to decrease the size of chest.

1 A) Choose the correct answer:

- Mangrove tree has long and strong roots that
 - a) resist the strong wind
 - b) resist the water waves
 - c) prevent the loss of water
 - d) absorb the underground water

B) Give a reason for each of the following:

- 1 Acacia tree has sharp spines around its leaves.
 - To prevent animals from eating its leaves.
- 2 The nurse ants send smelly messages to scout ants.
 - To alert the scout ants that the food is low in the colony.
- 3 Gills are very important organs for fish.
 - Because they enable fish to extract oxygen from water for respiration.

2 A) Complete the following sentence:

- When the Egyptian jerboa is in danger, it starts to run away, this action occurs in a very short time called the **reaction time**.

B) Mention the importance or function of each of the following:

- 1 Nerves
 - They carry messages from the brain to the spinal cord and other parts of the body and vice versa.
- 2 Large intestine
 - It absorbs the water from undigested materials.

3 A) Put (✓) or (X):

- The blood vessels in a penguin's feet bring cold blood up. (✓)

B) What happens if ...?

- 1 The polar bear has thin fur instead of its thick fur.
 - It can't adapt with the very cold weather in polar regions.
- 2 Your hand touches the spines of a barbary fig plant.
 - My hand will move quickly away in less than one second.

تطبيق



مذكرات جاهزة للطباعة

لتحميل الملفات التعليمية مجاناً للمعلم والطالب

مذكرات وملازم / مراجعات وملخصات / امتحانات / كتب الوزارة /
أدلة المعلم / دفاتر التحضير / سجلات مدرسية / أوراق تأسيس

امسح الكود بموبايلك علشان تقدر تثبت التطبيق

وتقدر ف أي وقت تحمّل ال نفسك فيه ببلاش

هيغنيك عن البحث والجروبات والقنوات الكثيرة

