

Science

# نماذج اختبارات الأضواء

لشهر أكتوبر



المف  
**6**  
الابتدائي

2026

**1 A) Choose the correct answer:**

- The growth of a living organism results from an increase in the ..... of cells in its body.  
a) length                      b) size                      c) number                      d) mass

**B) Give a reason for each of the following:**

- 1 The cell allows water to go outside it.  
.....
- 2 Muscle cells are long fibers.  
.....
- 3 Plant cells can perform the photosynthesis process.  
.....

**2 A) Put (✓) or (X):**

- The digestive system supports the nervous system by providing nutrients. ( )

**B) Define:**

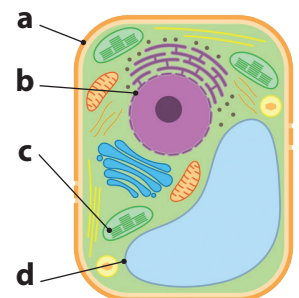
- 1 Cell  
.....
- 2 Tissue  
.....

**3 A) Write the scientific term:**

- The system that sends signals to control and move muscles. (.....)

**B) Look at the opposite figure, then answer:**

- 1 The opposite figure represents a ..... cell.
- 2 Label the different organelles of the opposite cell.  
.....  
.....



1 A) Complete the following sentence:

- The cellulose makes up the ..... which is found in ..... cells only.

B) What happens if/to ...?

- 1 A lot of water enters the cell

.....

- 2 The diaphragm muscle during inhalation

.....

- 3 The human body if the heart muscle doesn't contract and relax for a long period

.....

2 A) Write the scientific term:

- They are organelles that provide the cell with the needed energy. (.....)

B) What is the importance of ...?

- 1 Endoplasmic reticulum

.....

- 2 Endocrine system

.....

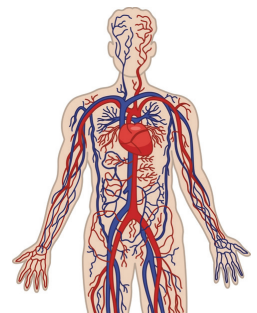
3 A) Cross out the odd word:

- Nucleus - Cell membrane - Chloroplast - Endoplasmic reticulum.

B) Look at the opposite figure, then answer:

- 1 The opposite figure represents the ..... system.

- 2 The main organs of this system are ..... and .....



1 A) Choose the correct answer:

- Among the organs which contain both involuntary and voluntary muscles is the .....
- a) heart                      b) arm                      c) eye                      d) leg

B) Answer the following questions:

- 1 The cell is considered a system. Explain this sentence.  
.....
- 2 Compare between voluntary and involuntary muscles.  
.....  
.....
- 3 Cross out the odd word, then write the relation between the other words:  
(Kidney - Ureter - Heart - Urinary bladder)  
.....

2 A) Write the scientific term:

- Sac-like structures used for storing nutrients, water, and waste in plant cells. (.....)

B) What happens if ...?

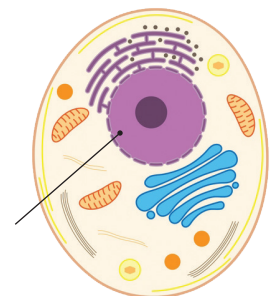
- 1 Microscope is not discovered  
.....
- 2 The kidneys stop working properly  
.....

3 A) Complete the following sentence:

- The energy-storing substance formed from glucose in the liver and muscles is called .....

B) Look at the opposite figure, then answer:

- 1 The opposite figure represents an ..... cell.
- 2 Write the function of the structure shown in the figure.  
.....



1 A) Put (✓) or (X):

- Plant cells are similar to animal cells in the presence of a nucleus. ( )

B) Give a reason for each of the following:

- 1 The plant cell has a definite shape, while the animal cell doesn't.

• .....

- 2 The nerve cells in the nervous system need nutrients.

• .....

- 3 The heart beats faster during danger.

• .....

2 A) Write the scientific term:

- Structures within the cell that have a special function. (.....)

B) What is meant by ...?

- 1 Cellular respiration process

• .....

- 2 Cytoplasm

• .....

3 A) Complete the following sentence:

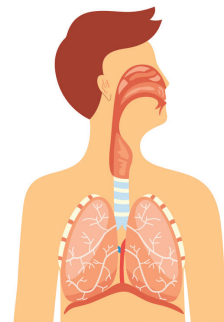
- The presence of ..... pigments gives plants their green color.

B) Look at the opposite figure, then answer:

- 1 The opposite figure represents the ..... system.

- 2 The main organ in this system is the .....

which helps in .....



**1 A) Choose the correct answer:**

- Which of the following cells is the smallest in size?  
a) Plant cells      b) Bacterial cells      c) Unfertilized bird egg      d) Animal cells

**B) First: Give a reason for each of the following:**

- 1 The body needs to convert complex food into simpler substances.  
.....
- 2 Heart muscle is considered an involuntary muscle.  
.....

**C) Second: What is the importance of golgi apparatus?**

- .....

**2 A) Complete the following sentence:**

- ..... absorbs water from undigested food before expelling it out of the body.

**B) What happens ...?**

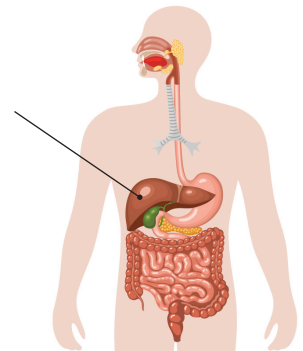
- 1 If there is no vacuole in the plant cell  
.....
- 2 To the brain of a cyclist when he sees a dangerous situation  
.....

**3 A) Put (✓) or (X):**

- Every plant cell has a cell wall and therefore does not need a cell membrane. ( )

**B) Look at the opposite figure, then answer:**

- 1 The opposite figure represents the .....
- 2 What is the importance of the organ labeled by the arrow?  
.....



# Science

## إجابات نماذج اختبارات الأضواء

لشهر أكتوبر



المف  
**6**  
الابتدائي

2026

1 A) Choose the correct answer:

- The growth of a living organism results from an increase in the ..... of cells in its body.  
a) length                      b) size                      c) number                      d) mass

B) Give a reason for each of the following:

- 1 The cell allows water to go outside it.
  - To keep the balance on both sides of the cell membrane.
- 2 Muscle cells are long fibers.
  - To allow movement and be able to store and use energy quickly.
- 3 Plant cells can perform the photosynthesis process.
  - Because plant cells contain chloroplasts that have chlorophyll, which absorbs sunlight needed to make food during photosynthesis.

2 A) Put (✓) or (X):

- The digestive system supports the nervous system by providing nutrients. (✓)

B) Define:

- 1 Cell
  - It is the building unit of living organisms.
- 2 Tissue
  - It is a group of similar cells bound together.

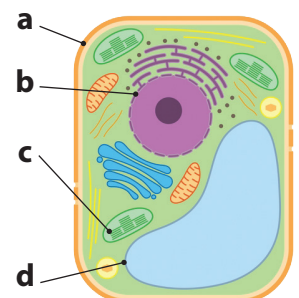
3 A) Write the scientific term:

- The system that sends signals to control and move muscles. (Nervous system)

B) Look at the opposite figure, then answer:

- 1 The opposite figure represents a plant cell.
- 2 Label the different organelles of the opposite cell.

- a- Cell wall                      b- Nucleus  
c- Chloroplast                      d- Large vacuole



1 A) Complete the following sentence:

- The cellulose makes up the **cell wall** which is found in **plants** cells only.

B) What happens if/to ...?

- 1 A lot of water enters the cell
  - The cell will swell until it bursts.
- 2 The diaphragm muscle during inhalation
  - It contracts and moves downward, allowing the lungs to expand and fill with air.
- 3 The human body if the heart muscle doesn't contract and relax for a long period
  - Blood will stop circulating, and the body's organs will not receive oxygen, which can lead to death.

2 A) Write the scientific term:

- They are organelles that provide the cell with the needed energy. (Mitochondria)

B) What is the importance of ...?

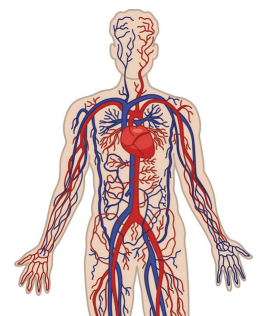
- 1 Endoplasmic reticulum
  - It helps in assembling and transporting proteins inside the cell.
- 2 Endocrine system
  - It controls the body responses and affects other body systems when it faces danger.

3 A) Cross out the odd word:

- Nucleus - Cell membrane - **Chloroplast** - Endoplasmic reticulum.

B) Look at the opposite figure, then answer:

- 1 The opposite figure represents the **circulatory** system.
- 2 The main organs of this system are **the heart** and **blood vessels**.



**1 A) Choose the correct answer:**

- Among the organs which contain both involuntary and voluntary muscles is the .....
- a) heart                      b) arm                      c) eye                      d) leg

**B) Answer the following questions:**

- 1 The cell is considered a system. Explain this sentence.
  - The cell consists of many organelles working together to perform a specific function.
- 2 Compare between voluntary and involuntary muscles.

Voluntary muscles	Involuntary muscles
They are muscles that we can control their movement.	They are muscles that we cannot control their movement.
Examples: Arm muscles - Neck muscles.	Example: Heart muscle.

- 3 Cross out the odd word, then write the relation between the other words:  
(Kidney - Ureter - Heart - Urinary bladder)  
• (Heart) (The other words are components of the urinary system).

**2 A) Write the scientific term:**

- Sac-like structures used for storing nutrients, water, and waste in plant cells.

**B) What happens if ...?**

(Large vacuole)

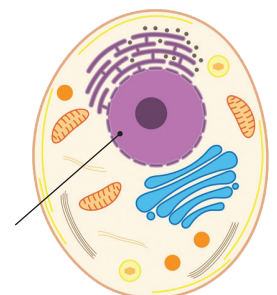
- 1 Microscope is not discovered
  - Scientists couldn't observe cells.
- 2 The kidneys stop working properly
  - Wastes and excess water will not be removed from the blood.

**3 A) Complete the following sentence:**

- The energy-storing substance formed from glucose in the liver and muscles is called **glycogen**.

**B) Look at the opposite figure, then answer:**

- 1 The opposite figure represents an **animal** cell.
- 2 Write the function of the structure shown in the figure.
  - It is responsible for cell division and the production of protein.



1 A) Put (✓) or (X):

- Plant cells are similar to animal cells in the presence of a nucleus. (✓)

B) Give a reason for each of the following:

- 1 The plant cell has a definite shape, while the animal cell doesn't.
  - Because the plant cell has a cell wall that gives it a definite shape, while the animal cell doesn't have a cell wall, so its shape is not definite.
- 2 The nerve cells in the nervous system need nutrients.
  - Because they need energy to send messages and control body activities.
- 3 The heart beats faster during danger.
  - To supply the body and muscles with more oxygen.

2 A) Write the scientific term:

- Structures within the cell that have a special function. (Organelles)

B) What is meant by ...?

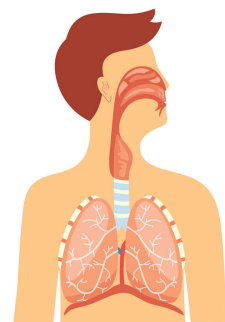
- 1 Cellular respiration process
  - It is the process that takes place inside the mitochondria where oxygen is used to obtain the chemical energy stored in food to help the cells perform their function.
- 2 Cytoplasm
  - It is a gelatinous liquid in which the cell organelles float.

3 A) Complete the following sentence:

- The presence of **chlorophyll** pigments gives plants their green color.

B) Look at the opposite figure, then answer:

- 1 The opposite figure represents the **respiratory** system.
- 2 The main organ in this system is the **lung** which helps in **providing the body with oxygen gas**.



1 A) Choose the correct answer:

- Which of the following cells is the smallest in size?  
a) Plant cells      b) **Bacterial cells**      c) Unfertilized bird egg      d) Animal cells

B) First: Give a reason for each of the following:

1 The body needs to convert complex food into simpler substances.

- To get energy that helps the body to grow.

2 Heart muscle is considered an involuntary muscle.

- Because it moves automatically and we can't control its movement.

C) Second: What is the importance of golgi apparatus?

- It helps in packing and transporting different materials inside the cell.

2 A) Complete the following sentence:

- **Large intestine** absorbs water from undigested food before expelling it out of the body.

B) What happens ...?

1 If there is no vacuole in the plant cell

- The plant can't store water and nutrients.

2 To the brain of a cyclist when he sees a dangerous situation

- It sends signals to the muscles to avoid the danger.

3 A) Put (✓) or (X):

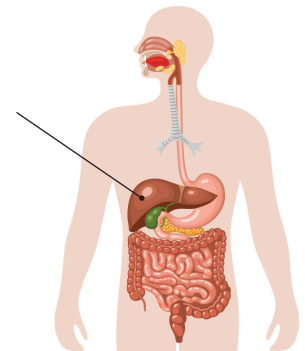
- Every plant cell has a cell wall and therefore does not need a cell membrane. (X)

B) Look at the opposite figure, then answer:

1 The opposite figure represents the **digestive system**.

2 What is the importance of the organ labeled by the arrow?

- It stores glucose sugar and converts it into glycogen.



تطبيق



مذكرات جاهزة للطباعة

لتحميل الملفات التعليمية مجاناً للمعلم والطالب

مذكرات وملازم / مراجعات وملخصات / امتحانات / كتب الوزارة /  
أدلة المعلم / دفاتر التحضير / سجلات مدرسية / أوراق تأسيس

امسح الكود بموبايلك علشان تقدر تثبت التطبيق

وتقدر ف أي وقت تحمّل ال نفسك فيه ببلاش

هيغنيك عن البحث والجروبات والقنوات الكثيرة

